



DEPAUL UNIVERSITY

COLLEGE OF LIBERAL ARTS AND  
SOCIAL SCIENCES

*School of Public Service*

# JOURNEYS

A PUBLICATION FROM THE STUDENTS OF THE SCHOOL OF PUBLIC SERVICE



SPS students attending their MPS 583 Research Methods Course taught by Dr. Danielle Vance-McMullen (upper left)

2021 Spring



## FROM THE DIRECTOR DR. EUAN HAGUE

The first graduate courses in Public Service Management at DePaul were taught in Fall 1970. That means that 2020-21 was the fiftieth year of public service education at DePaul. However, with the impact of the COVID-19 pandemic, things were far from normal this year! As faculty, we learned new skills teaching on Zoom, and a new language of course modalities being synchronous, asynchronous and hybrid. Teaching online using Zoom also gave us new opportunities. Faculty brought in guest speakers from out of state and were able to synthesize online materials with Zoom features like instant polling and breakout rooms.

On a personal note, Zoom enabled me to speak to students in England, Colombia, and the Netherlands. I was also able to do a Zoom discussion in my native Scotland, explaining the debates over Confederate commemoration in the United States.

Going forward, the School is looking to use these pedagogic lessons from the pandemic to offer greater flexibility in teaching, as technology enables us to live stream and record classroom sessions. The next fifty years of teaching in the School of Public Service will look very different to our first fifty years, but the commitment to our core mission of educating the next generation of public service leaders remains unchanged.

# FEATURED STORIES

## 2021 SPRING EDITION

### SPOTLIGHT

#### 26th School Of Public Service H. Woods Bowman Annual Lecture

Cole Neder | MPA '21

#### COVID-19 in Chicago's Neighborhoods: DePaul's Newly Created Chicago COVID-19 Community Health Equity Dashboard

Jacob Walls | MPP '21

#### Learning in a Remote World: Reflecting On Learning In The Pandemic Year

Nailene Gonzalez | MPP '22

#### Expecting The Unexpected: TEDx DePaul University

Jacob Walls | MPP '21

### ALSO IN THIS EDITION

#### Furniture Makes a House a Home

Laura Kolar | MNM '21

#### Interning Remotely

Jacob Walls | MPP '21

#### SPS Involvement with the Irwin W. Steans Center

Jacob Walls | MPP '21

#### Alumni Engagement Week

Cole Neder | MPA '21

#### The Chaddick Institute Virtually Travels to the 62nd Annual Transportation Research Forum Conference

Jacob Walls | MPP '21

#### Global Learning Experiences

Nailene Gonzalez | MPP '22



## SPS GRADUATE STUDENT DEGREE CHAIR AWARDS 2021

Crystal Bell | MPP  
Mandaline Dunne | MPP  
Linda Rae Scherzinger | MPP  
Laura Hool | MPS  
Nora Mary Beamish-Lannon | MPS  
Samuel M. Grobart | MNM  
Cole Neder | MPA  
Jonathan Mahaffee | MPA  
Cathleen Hamilton | IPS

## BA IN PUBLIC POLICY STUDIES AWARD

Anna Roth | PPS

## SPS SCHOLARSHIP RECIPIENTS 2020-2021

### Dr. Dominic G. & Helen T. Parisi Scholarship

Meaghan Morris | MNM  
Brianna Hale | MPA  
Christopher Hastings | IPS  
Jordan Manuel | MPA

### Michella McMaster Endowed Scholarship

Jasmine Lerma | MPA  
Eunice Heredia | MPP

### Dr. H. Woods Bowman Endowed Award

Erin Baynes | MPP

### Vincent de Paul Ministry of Service Endowed Scholarship

Bobby Hagy | MPP  
Effina Jackson | MNM  
Dion West | MPA

### Paul D. Coverdell Fellowship

Natalie Felton | MPP  
Shubi Bocko | IPS

# AWARDS & ACKNOWLEDGMENTS

## ALUMNI SPOTLIGHT

AMERICAN SOCIETY FOR PUBLIC ADMINISTRATION  
GREATER CHICAGO CHAPTER  
HONORED ALUMNI AWARD (2021)

### MARK PATOSKA

**Mark Patoska (MPA, 2012)** is the Manager of Local Government Research at the Civic Federation in Chicago. Mark provides analysis and recommendations on government finance issues for the Chicago region and Illinois in this position. Mark's analysis has helped push local governments to adopt more effective and transparent policies. He resides in the City of Blue Island, where he has served as Chair of the Plan Commission since 2017. Before his appointment to the Plan Commission, Mark was the 3rd Ward Alderman in the City of Blue Island from 2009 to 2013. As Alderman, he served as Chair of the Finance Committee and a member of the Community Development Committee. Mark is an Alum of the American Council of Young Political Leaders Professional Fellows Program (Indonesia 2018) and a veteran of the U.S. Navy. He is a Trustee-elect for Calumet Township, having recently won election to a four-year term in April 2021.



Image Source: Mark Patoska

### American Society for Public Administration Greater Chicago Chapter Student Award

### Adriana Stanovici



**Adriana Stanovici (MPA '21)** is a Master's in Public Administration student at DePaul University, graduating this spring. During her time at DePaul, Adriana has worked full time with the YMCA leading a global team to design and implement the inaugural YMCA Youth-Led Solutions Summit. Adriana has also received a DePaul University Community and Project Based Learning Scholarship and became Qualified Administrator for the Intercultural Development Inventory.

Image Source: Adriana Stanovici

The trend of virtual events during the COVID-19 crisis did not stop this year's 26th Annual H. Woods Bowman Lecture from being an insightful experience for students, faculty, and alumni. The DePaul School of Public Service invited Dr. Helene Gayle, the President, and CEO of The Chicago Community Trust, to speak on topics ranging from her journey in public service to closing the racial and ethnic wealth gap in the City of Chicago.



Image Source: Chicago Community Trust

## 26TH SCHOOL OF PUBLIC SERVICE H. WOODS BOWMAN ANNUAL LECTURE

FEATURING DR. HELENE GAYLE  
BY COLE NEDER

Dr. Gayle's past experiences intersect with what students and faculty research at the School of Public Service daily. This led to conversations on equitable COVID-19 recovery solutions, cooperation between public and non-profit organizations on shared interests, and other public policy topics of reducing wealth and income inequality. Dr. Gayle spoke in detail on Together We Rise, an initiative uniting corporate and non-profit partners to assist with an equitable recovery from the impacts of the COVID-19 pandemic. The initiative will distribute resources to the Chicago region to ensure economic recovery assistance will reach businesses and neighborhoods struggling with disinvestment and structural inequalities. The industry is actively supported by current leaders within the city, including Cook County Board President Toni Preckwinkle and Chicago Mayor Lori Lightfoot.

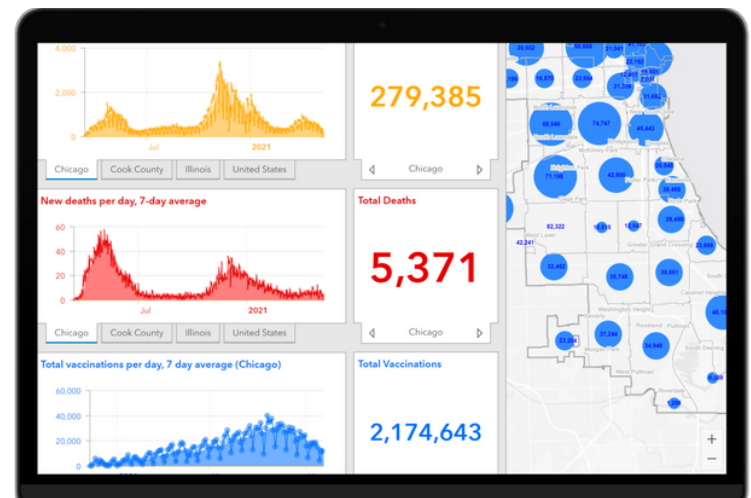
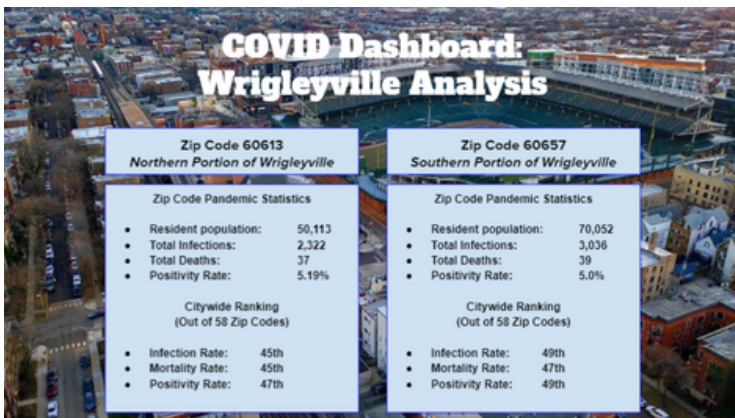
With the event held virtually, hundreds of current students, faculty, department leaders, and alumni were able to attend and join the conversation. Dr. Vance-McMullen commented after that, "The nice thing about it being virtual was that people who could not always attend a downtown event could easily attend. We had more geographically dispersed attendance and more alumni participation. Scheduling and attendance made it easier, audience interaction and the Q and A format can be a bit more challenging". Numerous students contributed with questions on networking advice, the decision-making process at the leadership level, and how the COVID-19 crisis will affect non-profit organizations in the future. Participants were able to see the importance of equitable public policy and how a strategic plan with a shared vision can make a difference for community members living in Chicago.



# COVID-19 IN CHICAGO'S NEIGHBORHOODS

## DEPAUL'S NEWLY CREATED CHICAGO COVID-19 COMMUNITY HEALTH EQUITY DASHBOARD BY JACOB WALLS

For the 2020-21 academic year, SPS faculty members Dr. Euan Hague and Dr. Joe Schweiterman were awarded a \$25,000 DePaul Academic Growth and Innovation Fund (AGIF) grant to create an interactive online dashboard that collated data about COVID-19 cases in Chicago. Working with Scott Smith (Chaddick Institute) and Cassie Follett (Geography), the dashboard went live in Fall 2020. Dr. Hague said, "The dashboard is updated automatically, and allows users to explore COVID's impact on specific neighborhoods or look at data like weekly vaccination counts." A second version of the dashboard that has enhanced capacity for searching and downloading data will be launched later in 2021.



Graduate students were offered the opportunity to conduct research on the effects of the COVID-19 pandemic on Chicago's neighborhoods using the dashboard and present their findings in December 2020 to a joint meeting DePaul's Chaddick Institute and its Center for Community Health Equity, a collaboration with Rush University. Two graduate student teams, one from the School of Public Service and another from the Master of Public Health program, presented case studies of the Wrigleyville and Gage Park neighborhoods with maps, photos and analysis.

**Cole Neder (MPA '21)** stated that "using the dashboard was truly eye-opening to see the health and economic disparities between different neighborhoods in Chicago." Neder and **Jacob Walls (MPP '21)** presented their case study on the historic Wrigleyville neighborhood, home to the Chicago Cubs Wrigley Field Stadium located on the city's northside. These two SPS graduate students reside in a block from Wrigley Field, and both concurred it was no surprise that the Wrigleyville neighborhood fared exceptionally well with COVID-19 infection, mortality, and positivity rates compared to other areas like the South and West Side neighborhoods. Neder spoke about the neighborhood vibe in Wrigleyville as being "a fraction of what it usually is. During a normal summer, the streets are filled with patrons entering and exiting the Addison Red Line stop on their way to a Cubs game or going out on the Clark Street strip to eat and drink at the various restaurants and bars". Both Neder and Walls agree that even though Wrigleyville fared well, compared to other Chicago neighborhoods, with health-related indicators from the COVID-19 pandemic, the community still was vulnerable to economic factors especially pertaining to small businesses in the area.

Master of Public Health program students **Preeya Waite** and **Iqra Hashwani** presented their case study on the Gage Park neighborhood located on the city's southwest side. According to these presenters, the Gage Park neighborhood did not fare well when it came to COVID-19 health and vulnerability factors. Gage Park is a predominately minority community with a significant portion of the population classified as essential workers. Waite & Hashwani chose the Gage Park neighborhood to present because both wanted to highlight health disparities within marginalized communities in Chicago. Waite states that "my primary interest in choosing the Gage Park neighborhood was to highlight the structural and social determinants of health that residents face daily". In addition, both presenters mention that these health disparities were present long before the COVID-19 pandemic. As a result of their presentation, Preeya Waite was invited to meet with Cook County Commissioner Alma Anaya's office staff. Anaya represents District 7, which includes Gage Park.

# LEARNING IN A REMOTE WORLD:

REFLECTING ON LEARNING IN THE PANDEMIC YEAR  
BY NAILENE GONZALEZ

Graduating from the University of Illinois at Urbana-Champaign during a global pandemic was NOT how I expected my senior year to end. Our Alma Mater statue didn't even have her graduation robes on! Since I'm a visual learner, online classes didn't come easy. I would always avoid the "beauty" of online courses. My peers loved to lounge around from home, but I loved to feel the quad's pavement under my feet as I sprinted from each building. Little did I know, my graduate school experience was going to be another guinea pig trial. "How do I share my screen?" is the question that will define this decade!

My first step to being a successful online student was to complain to my friends about living back home. I started to decorate my desk for every holiday to lift my spirits. I had a themed candle each month to coordinate with holidays as well. Yes, I am a Virgo sun. Creating a safe, homey environment is crucial for online learning. I used a daily planner to specify each of my tasks, and the approximate time that I should be completing them. It's easy to sink into your couch at home, so calendars and planners are necessary. At DePaul, I got to watch Dolores Huerta speak as well as attend many online lectures from community leaders. I also visited campus a couple of times just to remind myself that there is still community in virtual spaces. Graduate school in a pandemic era is what you make of it!



## Faculty Publications



### INNOVATIONS IN COMMUNITY- BASED CRIME PREVENTION

Robert Stokes

This book explores multi-year community-based crime prevention initiatives in the United States, from their design and implementation, through 5-year follow-ups. It provides an overview of programs of various sizes, affecting diverse communities from urban to rural environments, larger and smaller populations, with a range of site-specific problems. The research is based on a United States federally-funded program called the Byrne Criminal Justice Initiative (BCJI) which began in 2012 and has funded programs in 65 communities across 28 states and 61 cities.

### TOXIC CHEMICALS IN AMERICA

Kelly Tzoumis

This one-stop resource is ideal for understanding the extent to which toxic chemicals are used in American industry and agriculture—impacting public health and the environment through everything from industrial solvents to children's toys.

This two-volume set addresses all of those questions. Moreover, it presents and examines arguments marshaled by business interests, community leaders, scientists, activists, and lawmakers alike. It thus provides users with the information they need to assess the impacts accurately—pro and con—that industrial chemicals are having in shaping the world in which we work, eat, drink, breathe, and play.

# EXPECTING THE UNEXPECTED

TEDX DEPAUL UNIVERSITY  
BY JACOB WALLS

**Jamal McPherson (MPP '21)** was one of six speakers in TEDxDePaulUniversity's first-ever entirely remote TEDx Talk, which aired on May 21, 2021. TEDxDePaulUniversity is independently organized through a license provided by TED, the idea-generating nonprofit organization. This year's talk was hosted by Jim Mourey, associate professor of marketing at the Richard H. Driehaus College of Business, and the theme was "The Unexpected." The six selected speakers focused their respective talks around exploring life's unforeseen lessons.

McPherson's talk was centered around the tragic death of his aunt due to gun violence in 2016. He stated during his talk that, "When my aunt died, a piece of me died as well. We were one year apart and were raised underneath the same roof". McPherson talked about how he harbored hate towards the world after this incident but masked his pain from showing others. He says that this led to his thoughts and feelings consuming him, which resulted in the use of marijuana to cope with his internal struggle. However, McPherson says he turned his life around and devotes his time and energy to advocating for communities with a high gun violence rate. He reiterated that "I never expected to work with the same violence that took my aunt from me... I don't believe the man who shot my aunt was a murderer as the living conditions of communities with high crime and incarceration rates killed my aunt".

McPherson talks about how this experience taught him a couple of things about himself and the power of taking care of yourself mentally and physically. He states that "It's okay to feel uncomfortable in the face of unexpected life events. However, being honest and transparent about the current state of your reality and situation is the first step in facing the unexpected head-on". McPherson says that this TEDx Talk was set to occur last May and the TEDxDePaulUniversity committee had no contact with the speakers until a month before this year's talk. "The nature of this TEDx Talk was just another prime example of learning how to handle life's unforeseen events... I was in a different space in my life this year compared to last year and had to restart my whole approach to the topic completely. However, I saw a particular beauty to this and created an idea I was mentally and physically ready to talk about".



Jamal McPherson (MPP '21) speaking at the TEDxDePaulUniversity Talk

## DePaul Nonprofit Management Club

The DePaul Nonprofit Management Club is a student organization that was formed by SPS students in Fall 2020 and is dedicated to providing resources and opportunities within the nonprofit sector. Alongside Club President **Will McFarland (MNM '21)**, the executive board consisted of SPS students **Amanda Marks (MNM '21)**, **Cindy Burns (MNM '22)**, and **Sam Grobart (MNM '21)**. Dr. Danielle Vance-McMullen serves as the Club's faculty advisor. Due to the COVID pandemic, all 2020-21 events were virtual. A Fall panel focused on career planning and included SPS alums **LaVonte Stewart (MPA '15)**, Founder/Executive Director of Lost Boyz Inc., **TJ Johnson (MNM '13)**, VP of Corporate Partnerships at Lurie Children's Hospital, and **Amy Funk (MNM '12)**, Sr. Vice President at Ter Molen Watkins & Brandt. In Winter 2021, "Using Your Public Service Degree to do Good in For-Profits," included

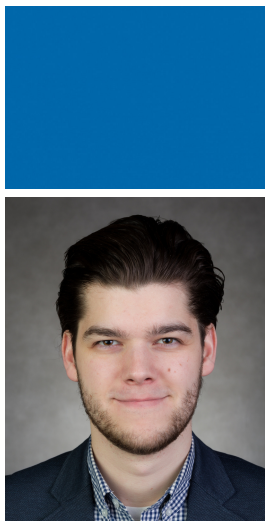


Image Source: Will McFarland

**Simone Gourguechon (IPS '11)**, Global Sustainability & ESG Strategy at McDonalds, among the guest panelists. Club president Will McFarland also pursued the SPS Certificate in Strategic Writing and Advancement for Nonprofits (SWAN). After graduation he began a PhD in Public Administration with a focus in Public and Nonprofit Management at UIC. Will plans to apply his experiences from his time at DePaul to his courses at UIC and his research focusing on the millage process of allocating property tax earmark revenue to support arts and cultural institutions. Look out for Club events in 2021-22 when incoming president **Meghan Ames (MNM '22)** will be coordinating activities.



# Furniture Makes a House a Home

LAURA KOLAR

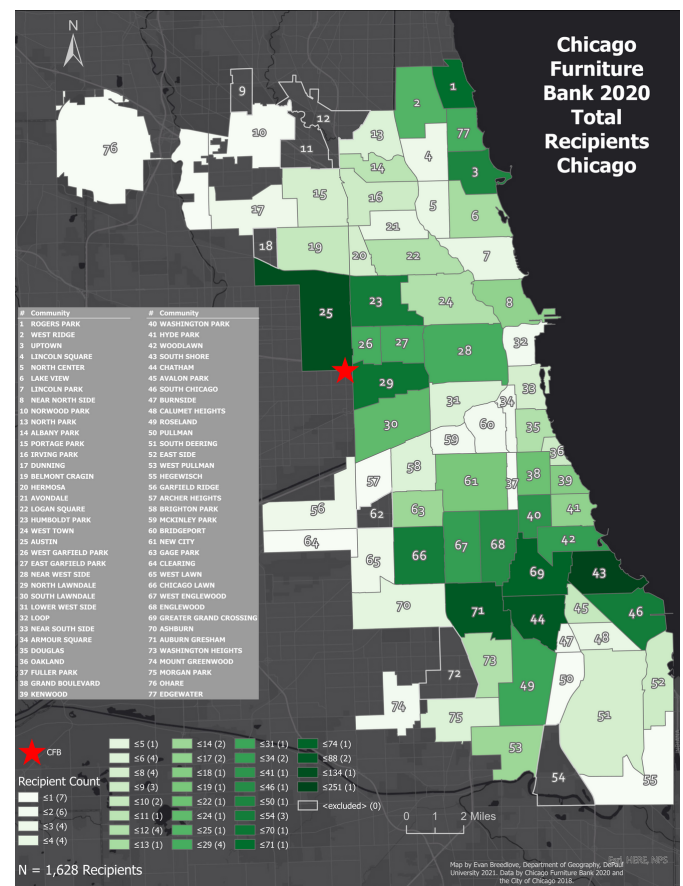
The Chicago Furniture Bank (CFB) is a nonprofit organization on the west side of Chicago that distributes gently-used furniture to people transitioning into permanent, stable housing. There are around 80 furniture banks in the US and CFB ([www.chicagofurniturebank.org](http://www.chicagofurniturebank.org)) was founded in July 2018 with a mission to help reduce the rate of recidivism in homelessness in the city. Dr. Euan Hague and School of Public Service graduate student **Laura Kolar (MNM'21)** have been working with the Chicago Furniture Bank since Fall 2018 to research the impact on recently-housed individuals of having furniture at home.

The Furniture Bank realizes that a home is more than a place to sleep and that it is a place to be lived in. To be a warm and welcoming home, a large part of this feeling comes from having furniture. People don't want to spend time in empty apartments and they are uncomfortable inviting visitors. The Furniture Bank provides beds, mattresses, chairs, kitchen tables, rugs, artwork, dishware, and a variety of other items. These items in turn make a blank, empty space into a home. In 2020, CFB provided furniture to over 1,600 Chicago families (see map), delivered furniture to clients in WI and IN, and furnished on average 13 homes a day. Kolar interviewed 15 caseworkers who work with the Furniture Bank. These caseworkers help clients who have recently been homeless find a home; they also work with those who have already found housing. The impact of owning furniture is apparent on these clients. Based on need, clients are paired with the Furniture Bank. The caseworkers have seen the impact of owning furniture has had on their clients and believe this is needed to make the retaining of these homes a success. They have all seen that their clients' overall well-being has been affected by having furniture in a home.

A home with furniture has positively impacted clients. Case workers say that their clients have improved nutrition, physical health, social and emotional health, self-esteem, education, employment, and substance abuse issues. Just trying to find housing puts so much stress on a person without the added cost of purchasing furniture. Having furniture provided eliminates that stress and turns an empty dwelling into a welcoming place. The other parts of their lives then start to fall more easily into place.

Case workers have seen their clients transform into more confident people after working with the Furniture Bank. One caseworker spoke of how it helped a client feel more able to bring others into her house which in turn helped her mental

health. She spoke about her client saying, "She felt so confident and comfortable and less depressed knowing she was able to share her space and time with other people that she loved. For her to be at her own table, in her own chair, in her own home, made her really happy." Other caseworkers spoke about the effects they saw on children in the household and how just having furniture has impacted their educations. When kids had a home with furniture, their grades rose as children had a place to sit and do homework, enabling them to better concentrate and focus on what they were doing. Furniture also gave them more structure, a comfortable bed to sleep in, and a table to sit at and eat nutritional meals. These things help keep kids focused and energized so they were able to keep learning throughout the day. Caseworkers love pairing their clients with the CFB. They all believe in the great work the Furniture Bank does and plan on continuing to partner to help provide stable housing to those in need in the Chicago area.





# Interning Remotely

By Jacob Walls

"Internships are an outstanding opportunity for students to apply their academic and professional skills and experiences in serving to build and strengthen organizations. Through these internships graduate students demonstrate their competencies, compassion, servant leadership, integrity, and ideals. These opportunities often lead to new positions of responsibilities and sometimes new employment. In addition, graduate students in the School of Public Service promote a unique perspective by fostering collaboration and coordination between public, private and civil society sector organizations."

(Michael Diamond, SPS Internship Coordinator)



Cathy Hamilton (IPS '21)

**Cathy Hamilton (IPS '21)** started her internship in March 2021 with The Chicago Field Museum. She uses this internship experience as a part of the MPS 610 Internship Capstone taught by Dr. Micahel Diamond. Cathy's internship is centered around an ethnography project that focuses on the impact of COVID-19 within Chicagoland's indigenous communities. Identifying 'race' through institutional data has led to the misidentification of indigenous communities. Cathy's project aims to develop a more accurate representation of urban indigenous people. Through her internship research, Cathy has found that a significant portion of race criteria list only biracial/multiple races or "other" as options.

Cathy uses her internship with the Field Museum to push to gain a more accurate description of urban indigenous communities. Cathy plans on using Geographic Information Systems (GIS) technology to accurately map several health and socioeconomic factors like COVID-19 morbidity, access to housing and transportation, and food deserts in indigenous communities in the Chicagoland area. In addition, she would love to expand her scope of research to analyzing other marginalized communities in Chicago by working with community partners like DePaul University's Egan Office of Urban Education and Community Partnerships.



Zoe Rutherford (MPA '21)

**Zoe Rutherford (MPA '21)** started her internship in June of 2020 with Minnesota's Officer of Higher Education (MOHE). Zoe is originally from the Minneapolis area but wasn't living in Minnesota at this internship position. She primarily works on MOHE's Get Ready Program, a federally-funded college, and career readiness program. Her research tasks are centered around resource mapping dual enrollment programs and postsecondary education options throughout the state of Minnesota. Zoe states that her course MPS 536: Statistics for Public Service using SPSS helped her learn how to record and analyze data. MOHE's Get Ready Program operates in middle and high schools across multiple districts in Minnesota. It helps students from low-income backgrounds, indigenous communities, and communities of color realize their aspirations through education and career advancement. Equity, Inclusion, Empowerment, and Integrity are some of the critical core values of the Get Ready Program. The civil unrest that has occurred in Minneapolis and the rest of the country; this past year shows that programs like getting Ready are vital to society and marginalized communities. As Zoe said, "We can only truly heal as a nation until we properly fix decades of systemic issues people face, and that is exactly what Get Ready strives to do."

Zoe is also a Graduate Assistant in the School of Public Service. After graduation, Zoe hopes to find a career that deals with metropolitan urban planning. She would love the opportunity to work for programs like the United States Department of Housing and Urban Development (HUD).



In Spring 2021, **Margaret Sullivan (MPA, '21)** began an internship with the Lawndale Children's Discovery Center (LCDC), a part of the Ogden Commons development in Chicago's west side North Lawndale neighborhood. Working remotely due to pandemic restrictions, Margaret has been meeting online with colleagues to produce a Companion Guide which will serve as a visual aid for visitors to the LCDC, a facility that is still in the planning stages. "Social Emotional Learning (SEL) is a top priority for the museum," Margaret explained. "I've been working to develop an SEL Implementation Plan for the LCDC [which] describes how SEL will be infused into every exhibit of the museum. For example, mirrors will be present in the Infant/Toddler exhibit so that the children may look at their reflections. The mirrors will help with the development of Self-Awareness and Social Awareness." As part of this work, Margaret has helped to devise an SEL Implementation Plan. "The Chicago Public Schools Office of Social Emotional Learning has been a super helpful resource, and they've provided me with extremely valuable feedback and advice." Margaret says that after the LCDC is completed, "and the doors are open at last, it will serve as an educational and dynamic safe space for the people of Lawndale and beyond."



Image Source: Margaret Sullivan

When **Patrick Hurley (BA, '21)** began his internship with the Virtual Student Federal Service (VSFS) in the U.S. State Department, he knew that he was going to be working remotely, but that was not a concern as his task was to search out and synthesize online publicly available data. "The internship is a project, where we do research on violence against environmental defenders in a designated country, and then report upon," explained Patrick. "What we found is many organizations and interested parties are looking to formulate international policy with that information." The issue of environmental management and conservation, Patrick learned, involves numerous parties, from multi-million dollar corporations and international organized crime to the local community and grassroots organizations. Working on the project with a team of other remote interns was "definitely an interesting experience... it's been a constant struggle of trying to find good times to communicate as we're not all in the same time zone." Patrick worked independently and then met with other members of the research team and supervisors in Zoom meetings to ensure that everyone was on the same page regarding tasks and assignments. Following online presentations to federal officials and representatives of the countries engaged in the project, Patrick said that his remote internship "definitely taught me a lot about the process of researching and different aspects of policy, including court decisions and what a community wants." Patrick pursued his internship for course credit by enrolling in PPS 398 in Fall 2021. The coursework, he said, "allowed me to self-reflect on what I could do to improve the flaws we had in our communication systems and how to plan."



Image Source: Partick Hurley

---

## *Gates Foundation Grant Supports Faculty Research*

**Professor Danielle Vance-McMullen** was awarded a 17-month, \$200,251 grant from the Bill and Melinda Gates Foundation to examine data around Donor-Advised Funds (DAFs). DAFs are nonprofit entities that manage charitable giving for individuals, and Vance-McMullen is an expert in this type of financing. "This will substantially increase the evidence base around Donor-Advised Funds (DAF) and high-net-worth giving," said Vance-McMullen, "and the Gates Foundation award will enable a coordinated approach to data collection and dissemination." Under Vance-McMullen's leadership alongside her collaborator, Dr. Dan Heist (UNC-Wilmington), the Donor Advised Fund Research Collaborative (DAFRC, <https://www.dafresearchcollaborative.org/>) will develop a database to collect and share data between DAF sponsors and researchers. The primary goal of the research is to collect anonymized individual data from donor-advised fund sponsors. "Building off the Giving Tuesday Data Commons," explains Vance-McMullen, "the project will customize a platform to securely store and share DAF data for approved research projects [and] DAFRC will convene researchers on an annual basis to discuss DAF research data and ongoing research made possible through this database."



# SPS STUDENTS' INVOLVEMENT WITH THE IRWIN W. STEANS CENTER

By Jacob Walls

## Community Engagement

**Kimberly Fair (MPP '22)** was awarded the Racial Equity Graduate Research Fellowship by the Irwin W. Steans Center for Community-based Service Learning and the Center for Black Diaspora. For this fellowship, Kimberly is conducting community-based research on efforts to advance racial equity in Chicago. Her research seeks to evaluate fellowship and mentoring program success at combating systemic racism through economic mobility and empowerment in 18- to 30-year-old black men. Barbara Smith, Steans Center Associate Director, who oversees the fellowship program, said, "The fellowship program gives African-American graduate students who demonstrate a commitment to racial equity an opportunity to advance their learning while promoting racial equity in the Chicago region. In collaboration with community organizations, the Fellows propose and execute research projects that advance solutions that counter systemic racism through policing, economics, education, housing, policy, etc."



Kimberly Fair (MPP '22)

Fair's research project will comprehensively review current and past program participants to assess how apprenticeships and mentoring programs collectively can combat structural racism and promote economic mobility in Black male youth. With her fellowship running until July 2021, Kimberly will be analyzing how effective non-profit organizations are in promoting economic mobility within young black men. She is primarily following Minneapolis, MN's Man Up Club, a non-profit, mentor-leadership organization for minority males that focuses on academic discipline and building life skills within young black men. Kimberly's primary assessment of organizations like The Man Up Club is the various programs they offer to alleviate poverty within marginalized communities. Also, a 2021 Chaddick Scholar, Kimberly has a deep passion for economic policy and how it can tackle poverty in the US. Her area of interest is developing policy programs at the state and municipal levels to alleviate poverty for distressed black communities.



Jamal McPherson (MPP '21)

## Restorative Justice

SPS students **Jacob Walls (MPP '21)** and **Jamal McPherson (MPP '21)** joined DePaul's Institute for Restorative Academic and Civic Engagement Planning Committee. One of the main purposes of this Planning Committee is to expand higher education in prisons by coordinating such expansion among schools/universities and correctional institutions. This Planning Committee also strives to offer "wrap-around" support services for students who were/are incarcerated or have a felony conviction and for students with loved ones in such circumstances. Jamal explained, "I joined the Civic Engagement Planning Committee to help add to the body of resources that could amplify the voices of those directly impacted by our most pressing issues." Walls states that, "for a majority of my life, my father has been in and out of correctional centers and jails throughout Illinois. People don't realize the effects incarceration has on not only the individual incarcerated, but their loved ones as well. The whole family is essentially incarcerated". Both men hope to use their roles with this Civic Engagement Planning Committee to advocate for communities and people affected by incarceration so that there is meaningful reform to the criminal justice system.



Jacob Walls (MPP '21)



# ALUMNI ENGAGEMENT WEEK

BY COLE NEDER

In May 2021, the School of Public Service took advantage of the opportunities offered by Zoom to invite alumni to classes and panel discussions as part of its Alumni Engagement Week. Anchored around the School's annual Authentic Conversation event, which each year allows students to meet and talk with distinguished leaders of public affairs, non-profit management, and international affairs in an informal and discussion-based setting, a dozen guests participated across four days of classes. Alumni Engagement Week allowed students to learn about the guests' leadership experiences and gain insight into how they can pursue similar career paths and build their networks. On Monday, an "Internships to Careers" panel was hosted by Professor Michael Diamond, and alum **Jim O'Reilly (MPS '99)** spoke with students in MPS 500 - Introduction to Public Service Management. "It was great to be able to talk to students about how the SPS program influenced my work and helped identify opportunities that I discovered as a result of being part of the SPS community," explained O'Reilly. Tuesday's contributors included, among others, **Lisa Hinton (MNM '12)**, Executive Director and Senior Vice President of the American Heart Association's Metro Chicago office, and **Alexandra Santana-Baesel (MPS '08)**, Director, Training & Learning Strategy, Brio Skills.

The Wednesday evening's Authentic Conversation comprised a three-person-panel discussion between **Ghida Neukirch (BA, '93)**, City Manager of Highland Park, IL; **Laura Valdez**, Executive Director of Fort Collins Museum of Discovery; and **Michael May (MPA, '17)**, Village Administrator for the Village of Volo, IL. All three took unique paths to their current positions within the field of public service. Professor Nick Kachiroubas moderated the conversation and started by asking Valdez where her passion for the local government came from. Valdez stated she "always wanted to do something to help communities". After focusing her early career on education and working and serving underprivileged areas, Valdez's expertise with public-private partnerships and nonprofits led to her current position in Fort Collins, CO. SPS student **Michael Reynolds (MPA '21)** asked the panel, "What would you say was the most challenging experience you've faced on the job and how did you go about that?" Valdez responded, "It wasn't this year [2020-2021 pandemic] surprisingly... there was a time during 2016-2017 in which the State of IL had a two-year budget impasse. The City of Elgin was projecting a \$4m, \$8m, and \$12 million deficit out of a three-year financial plan. The most challenging aspect was developing a strategic plan not to lay off employees and raise property taxes. We found ways to diversify our revenue stream in nontraditional ways without laying anyone off."



**Ghida Neukirch, M.P.A.**



**Laura Valdez, M.P.A.**



**Michael May, M.P.A.**

Neukirch stated that she "really got to hone in on my community engagement and local government skills while taking a political science class during my undergrad at DePaul." She has an extensive history of working for municipalities across the Chicago Metro Area like Niles, Mt. Prospect, Buffalo Grove, and Highland Park. Neukirch emphasizes that she "absolutely loves what she does... it is extremely challenging, but the rewards outweigh any challenges that I've had to face". Neukirch also stressed the importance to the audience to "Hire people that will complement the organization and vice versa." **Michael May (MPA, '17)** talked about how he "took the nontraditional route to local government and stumbled his way into the Village [of Volo] manager's office." Referring back to Reynolds' question, May answered saying that, "the pandemic has caused a lot of issues within our Village and the entire world as well, but people have come together as a community to work through pressing challenges." A central theme that each panelist discussed was how to handle the unforeseen events and the challenges that arise from them, a common response being how to find creative solutions that are "outside of the box" and nontraditional. Students and other faculty members in attendance appreciated the transparency and candor from each panelist and their insight into pursuing a career in local government.

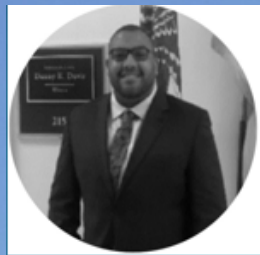
"I had the pleasure of being able to speak to some of my experiences during Dr. Vance-McMullen's [Thursday, MPS 533] Statistics in Policy class," said **Adam Lomasney (MPA '14)**, Director of Aviation and Freight, New York City Economic Development Corporation. "Having been in the student's chair in the not too distant past, I appreciated the frank discussion with students around what it takes to break into a career after you leave DePaul." Also, on Thursday evening, Prof. Mike Frigo's MPS 515 Nonprofit Financial Administration was joined by one of his former students, **Amy Funk (MNM '12)**. "Amy provided so many helpful tips for those of us looking ahead to our careers in the nonprofit sector," said **Charlotte Klein (MNM '22)**. "Most significant to me was her openness and willingness to provide support even after the session ended - she made it clear that if we had any questions or needed guidance, she was happy to connect at any time!" Funk, in turn, enjoyed participating: "It was really rewarding to see the next generation of DePaul SPS alumni and answer their questions. I could never have imagined when I was a student that I'd be speaking to a class one day!"



# The Chaddick Institute & The 62nd TRF Conference

BY JACOB WALLS

Three SPS students and two from Sustainable Urban Development (SUD) presented virtually at the 62nd Transportation Research Forum (TRF) conference in April 2021.



Jacob Walls  
Graduate Student  
DePaul University



Crystal Bell  
Graduate Student  
DePaul University

The Chaddick Institute for Metropolitan Development sent five graduate students to present their research topics at the 62nd Annual TRF Conference which spanned over the course of 3 days in April 2021.

The first group of graduate students consisted of Jacob Walls (MPP '21), Crystal Bell (MPP '21), and Borja Manuel González Morgado (SUD '21). They presented on their 3-part policy brief on The Growth of Amazon Air: May 2020 to February 2021. The emergence and expansion of Amazon Air, a subsidiary of retailing giant Amazon, is a significant development in the U.S. air cargo sector. The airline was created to support the movement of inventory between Amazon's warehouses and fulfillment centers and enhance the speed and efficiency of package delivery to customers.

The Chaddick Research Team analyzed roughly 1,700 flights from 2020 to 2021. Their analysis shows that there is significant growth in the carrier's recent initiatives in the expansion of its U.S. and international networks. These changes in Amazon's domestic and international flight volume have positioned the airline for additional growth in the next six months.



Kimberly Fair  
Graduate Student  
DePaul University

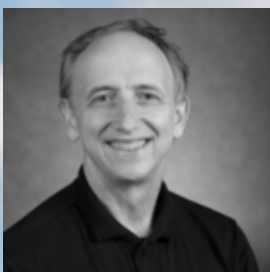


Mitch Hirst  
Graduate Student  
DePaul University

The 2nd group of graduate students consisted of Crystal Bell, Kimberly Fair (MPP '22), and Mitch Hirst (SUD '21). Their presentation was titled, "The Degradation of Service on the National Intercity Bus Network", which explores the extent of service decline quality on the network has since 2016. The group conducted their research to measure the approximate reduction in service and detailed the increased duration of trips on the national intercity bus network as a result of schedule cuts instituted before and during the COVID-19 pandemic.

These researchers analyzed the changing duration, number of stops, and other route characteristics between 2016 to 2021 by drawing upon schedule data from 186 routes in which customers have no viable scheduled ground transportation options other than the intercity bus network. This paper uses these results to inform our exploration of the implications of the degradation of service for populations that depend on the network, including low income travelers, immigrants, and those who choose (or prefer) not to drive.

School of Public Service Professor Joe Schwieterman, who mentored the students and oversaw their research, said that "Presenting at conferences is a great learning experience for our students. For the TRF conference, the students followed their projects from start to finish, collecting and analyzing data and then creating their 20-minute presentations. They did an excellent job." Schwieterman also reflected that "It was strange to attend a conference about travel without traveling to it!"



Joseph P. Schwieterman, PhD  
Director of the Chaddick Institute &  
Professor, School of Public Service

# GLOBAL LEARNING EXPERIENCES

*By Nailene Gonzalez*



**Dr. Kelly Tzoumis**

The School of Public Service has long considered itself to be "Global by Design." In a year in which all of the regular Study Abroad Programs were cancelled, **Dr. Kelly Tzoumis** offered students an international perspective through Global Learning Experience (GLE) in her online courses. GLE brought a larger world view for SPS graduate and undergraduate students during this period of quarantine and restricted travel, and will continue to be available in future. Before the pandemic, GLE also opened up access to international exchanges for learners with accessibility concerns, mobility issues or other learning needs, and without the costs (or limitations) of travel. It is a favorite of many students across DePaul who have schedule conflicts which means they cannot travel to campus or abroad.

Dr. Tzoumis joined DePaul in 2004, and moved into SPS in 2020 when faculty and curriculum from the BA in Public Policy were integrated into SPS. She is completing several research projects which include explorations of international water distribution and an update to the ratings of

environmental impact statements, both assisted by students from DePaul University. Dr. Tzoumis is also completing a grant that evaluates the quality of writing in undergraduate Public Policy (PPS) classes, as well as the impact of using Writing Fellows in courses. An advocate and passionate user of GLE, Dr. Tzoumis states that her partnerships with institutions in Brazil, Italy, Greece and the Navajo nation, among others, "has really provided accessible global experiences for all students regardless of ability or costs." She continues, "GLE takes place in all my courses on environmental issues to create a more enriched learning experience for students." Dr. Tzoumis' planning means that each

of her courses use different partnerships and role playing scenarios so that students can have many different global experiences before they graduate. Students report that they enjoy interacting with students from other universities to explore case studies on urban planning, sustainable land uses and brownfield remediation. GLE enables SPS students to learn examples and policies from other countries as they learn about how these function in the United States. In Fall 2021, several of Dr. Tzoumis' GLE partners will collaborate with SPS students on a multifaceted game approach to addressing environmental issues in PPS 302/MPS 577 Environmental Conflicts and Mediation course that will be cross-listed with Applied Diplomacy (DPL 395/495 and PPS 302/MPS 577). These games usually take place in the mornings on Fridays and Saturdays due to time zone issues. There are about 7-8 roles that students sign up for and have to coordinate with international peers. There are general instructions and confidential scripts for each role. Students learn how to

compromise and collaborate in an environmental conflict globally. Dr. Tzoumis said, "It is really exciting for students to come together to simulate the praxis of the issues they read about and do projects in the course with international partners as part of DePaul's Global Learning Experiences." This approach places the students in the role of experiencing the issues associated with global environmental concerns and supplement the course's assignments and readings.



*Dr. Tzoumis working with long-time GLE partner Prof. Cassatella (left), pictured here on a field trip in Italy with students in urban planning from the Politecnico di Torino. These students are looking at a brownfield site that has been redeveloped into an urban skate park, with affordable housing nearby that was repurposed from being used for the 2006 Winter Olympic Games.*





Image Source: Rachel Gregoire

# *New Faces On The 16th Floor*

The School of Public Service brought back two familiar faces to the team in Fall 2021 : **Rachel Gregoire** and **Dr. William Kling**.

**Rachel** is a qualified administrator of the Intercultural Development Inventory and Intercultural Conflict Style assessments, a professor of Management of Intercultural Diversity at DePaul University and has collaborated with leading institutions including Loyola's Executive & Professional Education Center, the National Urban League, the Heavener School of Business at the University of Florida and Ferrara Candy Co.

In 2021, her company, Fam Foolery, Inc, which is a social enterprise that she is co-founder and president of, was selected as one of iHeart Radio's Brilliantly Black Businesses. Prior to establishing Fam Foolery, Rachel served as a key player in advancing digital career management resources for executive leaders of American College of Healthcare Executives' (ACHE) and alumni through DePaul University's Office of Advancement. Rachel is a dynamic speaker who uses her unique blend of intercultural competency and career management expertise to serve as a catalyst for workplace excellence. She is also a nationally recognized as an inclusion strategist within the non-profit, association, and higher education sectors who has presented to thousands of professionals (from undergraduate students to the senior executives) across the country.

## STAFF SPOTLIGHT

---

**By Jacob Walls**

I asked Rachel how her experience with presenting sensitive topics to a wide variety of students, corporate executives, and public/private sector workers is and she answered with, "You have to meet people where they are and take into consideration everyone's individual experience levels." Professor Gregoire would then talk about how this led her to teach at SPS because she has the opportunity to teach the next generation of leaders. "The students I've had so far at SPS come from a wide variety of backgrounds. Seeing them having meaningful transparent interactions with one another over topics like intercultural communication and addressing conflicts in the workplace helps mold them into a "jack of all trades" leader in public service."

With students and faculty still feeling the effects of the COVID-19 pandemic, Professor Gregoire wants SPS graduate students to still think about the relationships they make in and outside the classroom. She stresses the importance of life outside of one's perspective degree and exploring the networking experiences with fellow classmates and SPS alumni. Professor Gregoire also mentions that students and faculty members should be honest with each other about the challenges and fatigue they face with online interactions and remote learning in general. She states that, "You can't fix a problem that you aren't willing to face" and I think that is true with managing intercultural differences in the workplace as well. Professor Gregoire's class has been very eye-opening to me and has allowed for me and my fellow classmates to truly have transparent conversations with one another and be able to learn about people's diverse backgrounds into choosing SPS as their degree program.

**Dr. William Kling** is an attorney and public policy expert with over 25 years' experience in the public and non-profit sectors. He worked for two well-known public sector law firms in Chicago, and served as in-house counsel at a community college for several years. His law and policy practice includes clients on the cutting edge of social change including an aquaponics vertical farm, a medical cannabis cultivator, a water quality research and education center, a substance abuse prevention program, and the African American Family Commission, among others.

Dr. Kling has taught at multiple Chicagoland Universities including three years at DePaul's Master of Public Health Program.

I asked Dr. Kling what it was like to teach his MPS 560 Administrative Law course remotely and he replied, "I have taught on different types of platforms and have actually fared quite well teaching on Zoom". He goes on to state that the smaller class sizes have definitely benefited teaching on Zoom and that students have been able to utilize resources more effectively. Dr. Kling stresses the importance of students scheduling one on one meetings with him as he wants to make sure students are finding the right avenues for employment, academics, and other aspects of personal/career goals. His Administrative Law class is structured around the question, "what do future public administrators need to know about administrative law?"

Dr. Kling, a lot like Professor Gregoire, caters his course materials to his audience. He states that, "Zoom allows for high profile guest speakers to come and offer their respective insights to students". Dr. Kling believes that MPH and MPS students have always been very driven students and even thinks that the Covid-19 pandemic has made these students even a little more motivated.



Image Source: William Kling

## CONTRIBUTORS



**CONTRIBUTOR**  
Cole Neder | MPA



**EDITOR**  
Jacob Walls | MPP



**ASSOC. EDITOR**  
Nailene Gonzalez | MPP



**CONTRIBUTOR**  
Laura Kolar | MNM

### *Did You Know?*

The 2020-21 academic year was the 50th year of graduate education in public service at DePaul. The School of Public Service thanks our faculty, staff, alumni, and current students for their dedication and commitment to the School and its mission.