

Social Science Research Center

Annual Report 2017

ANNUAL REVIEW

<i>About Us</i>	2
<i>Assistance and Support</i>	3
<i>Testimonials</i>	9
<i>Resources</i>	13
<i>Programming</i>	16
<i>Scholarship</i>	18
<i>Special Projects</i>	21
<i>Faculty Needs Assessment</i>	22
<i>Conferences & Workshops</i>	23
<i>Events</i>	24
<i>Information Sharing</i>	26
<i>Staff</i>	28
<i>Advisory Board</i>	29



DEPAUL UNIVERSITY

SSRC Website | ssrc@depaul.edu | **773.325.2164**



Social Science Research Center



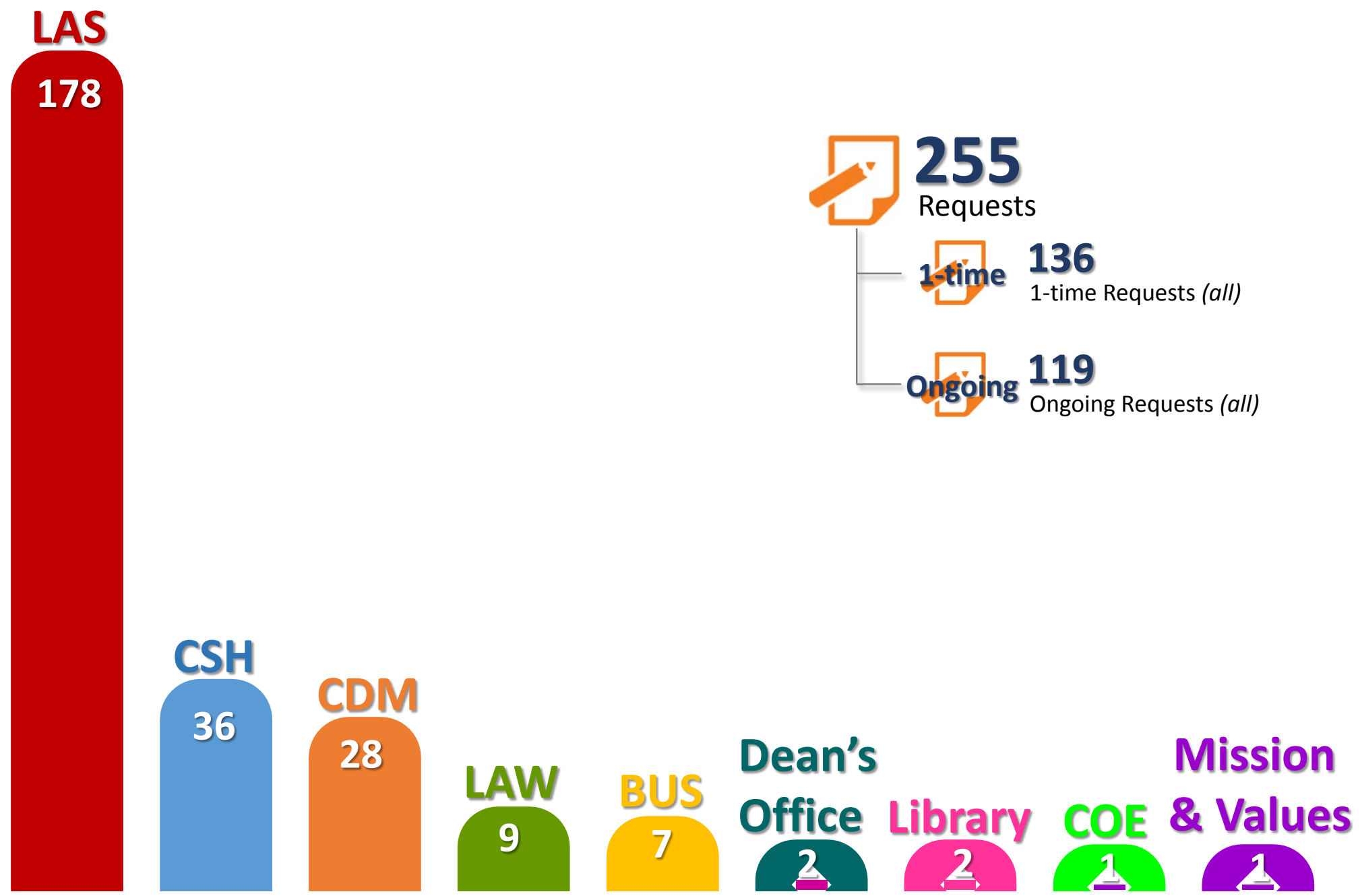
The Social Science Research Center (SSRC) was established within the College of Liberal Arts & Social Sciences to centralize support for faculty and students engaged in research and creative activity at DePaul University. The Center resulted from nearly 18 months' worth of discussion, planning, and strategizing among members of the Social Science Research Center Task Force, a diverse group of faculty scholars within the College. Task Force members envisioned the Center as a communications hub, a resource and data repository, and a technical assistance provider that would help faculty get their work into academic publications as well as the public realm. The Center's promotion of cross-disciplinary, multi-methodology scholarship and its intention to serve as a university-wide meeting ground and intellectual focal point advance the spirit of [VISION twenty18](#), a strategic plan designed to make DePaul one of the country's premier urban Catholic universities.

Purpose and Mission

The SSRC promotes, enhances, facilitates, and supports faculty, staff, and student engagement in methodologically diverse, socially relevant research and creative activity by providing the physical space and human capital necessary to develop a robust infrastructure for scholarly and artistic work. SSRC assists faculty scholars in all phases of research and creative activity development, from conceptualization and design to completion, documentation, and dissemination. In addition, the SSRC helps scholars obtain internal and external funding for their work, implement funded research and artistic programs, and form mutually productive and rewarding collaborative enterprises.

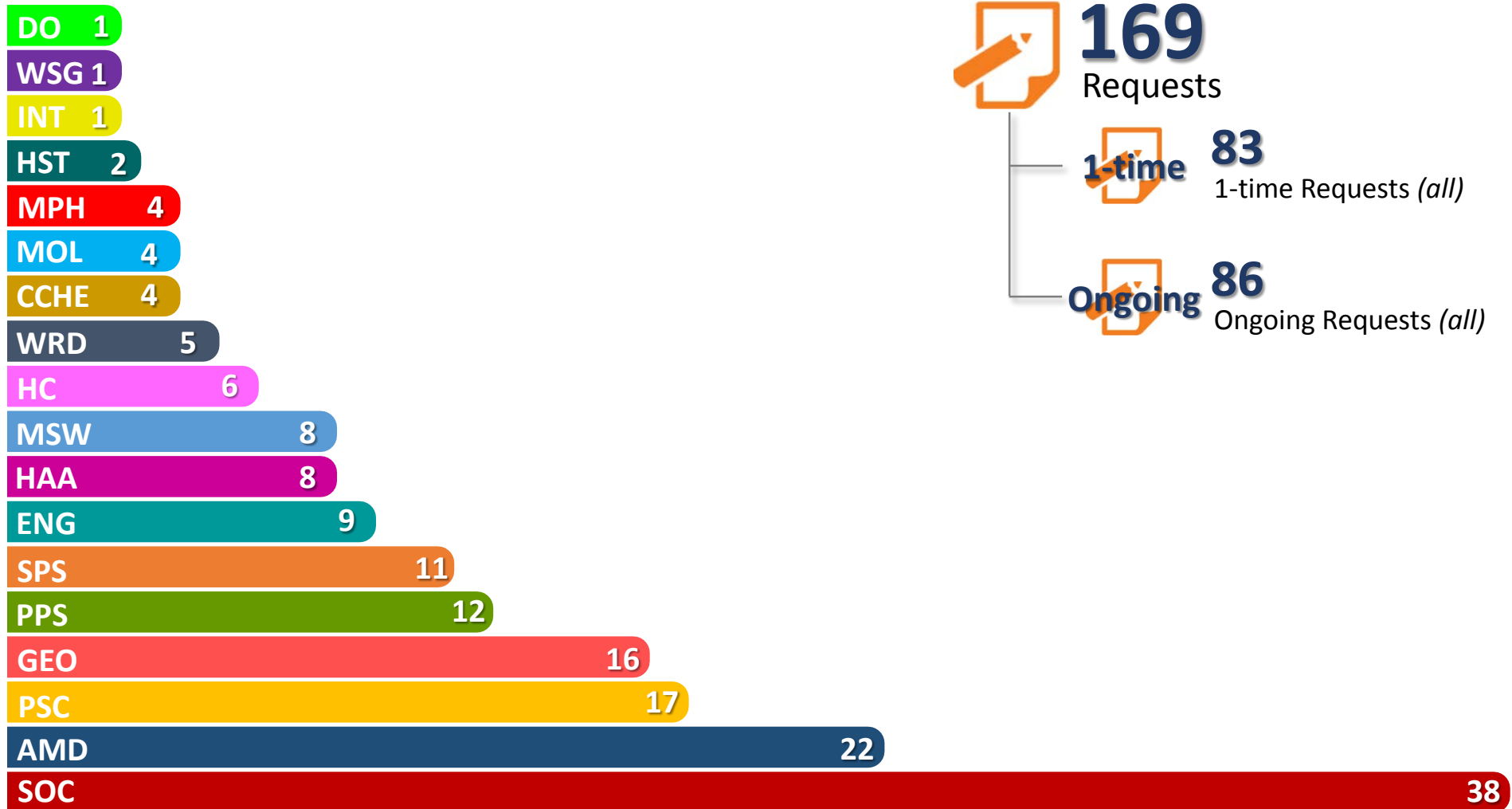
Assistance and Support

Requests by College



Assistance and Support

Requests from LAS

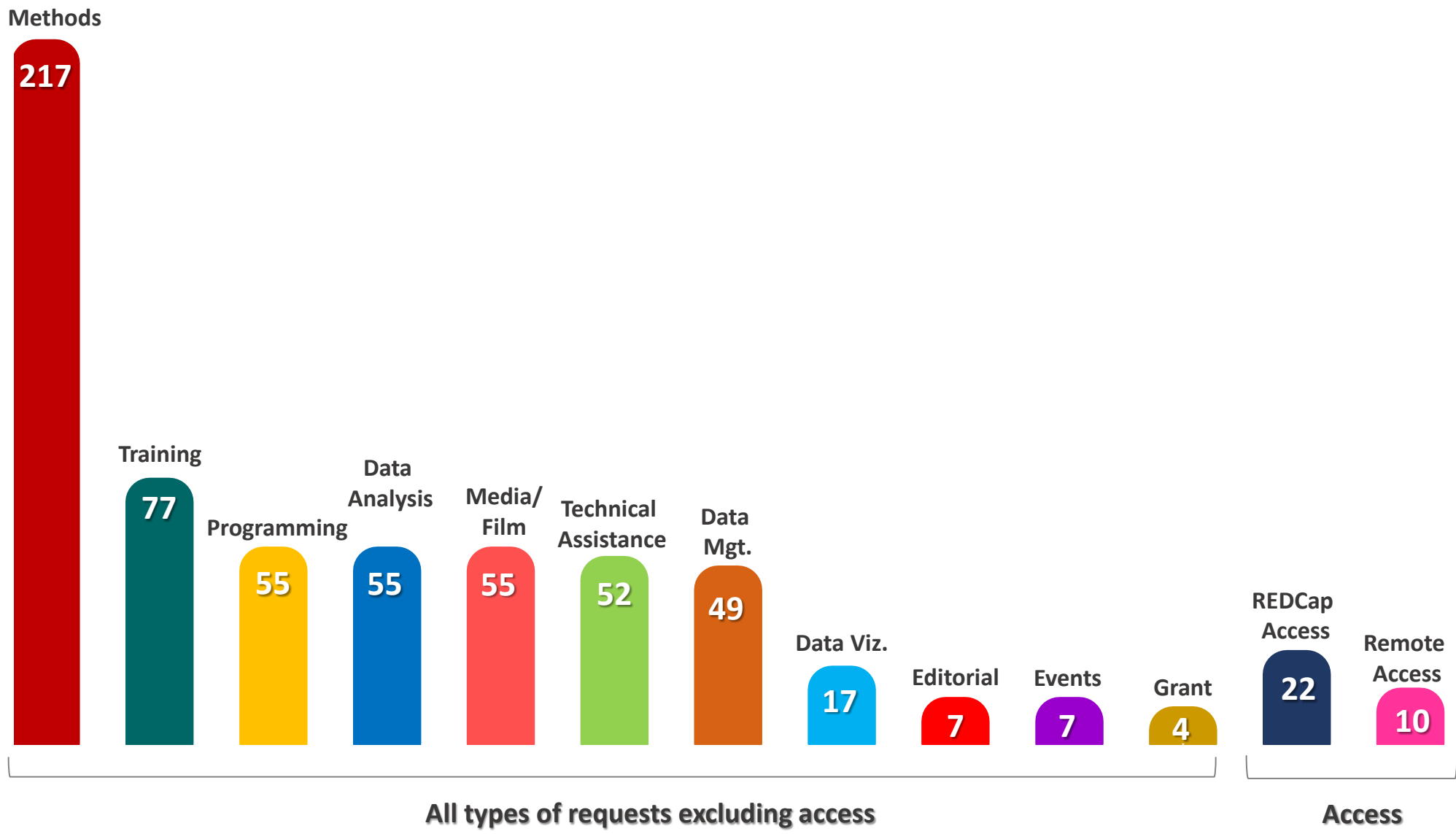


HC – Humanities Center
DO – Dean’s Office, LAS
WGS – Women’s and Gender Studies

Assistance and Support

Requests* by Type of Service DePaul-Wide

* A single request may include multiple types of service



All types of requests excluding access

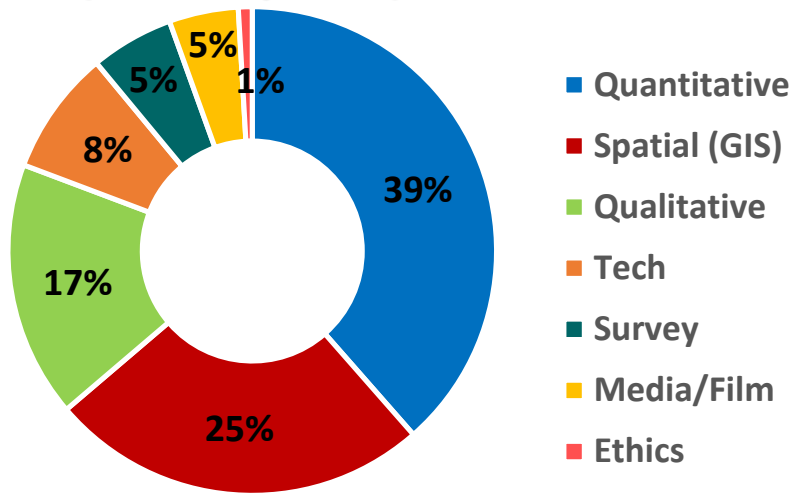
Access

Assistance and Support

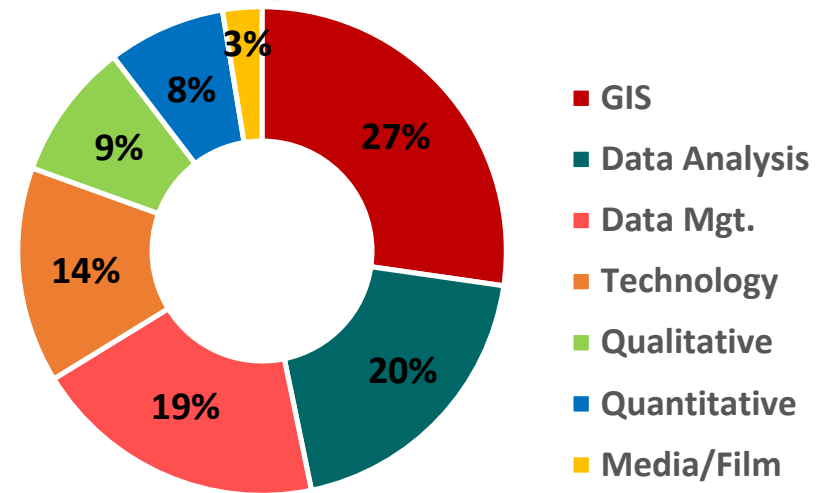
Breakdown of Major Types of Service DePaul-Wide

* A single request may include multiple types of service

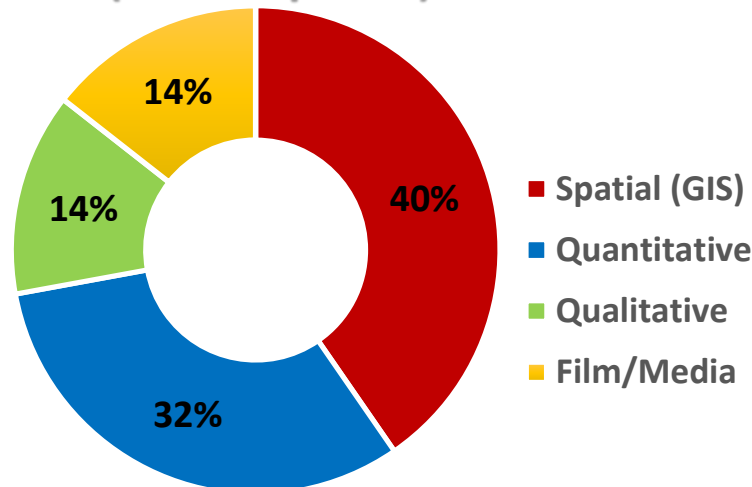
Methods (217 Requests)



Training (77 Requests)



Data Analysis and Management (104 Requests)

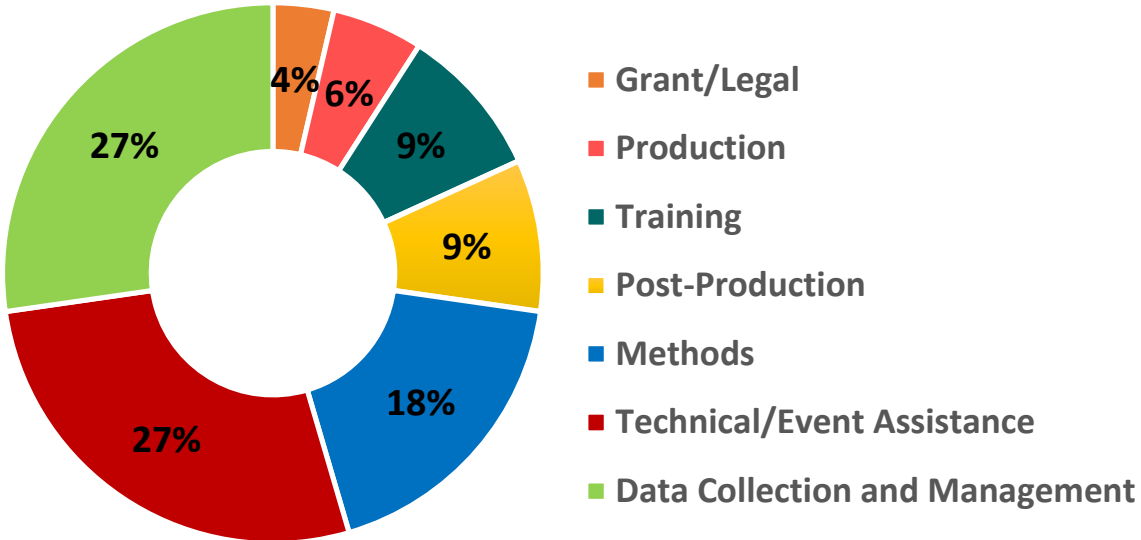


Assistance and Support

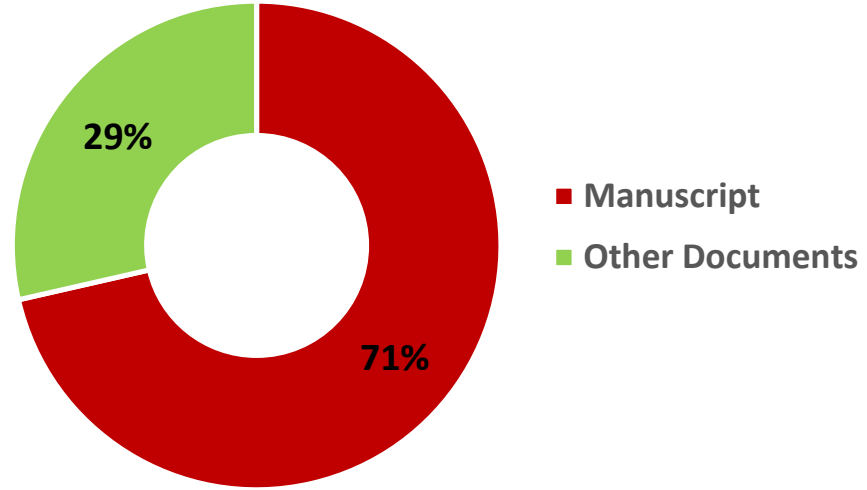
Breakdown of Major Types of Service DePaul-Wide

* A single request may include multiple types of service

Media/Film (55 Requests)



Editorial (7 Requests)

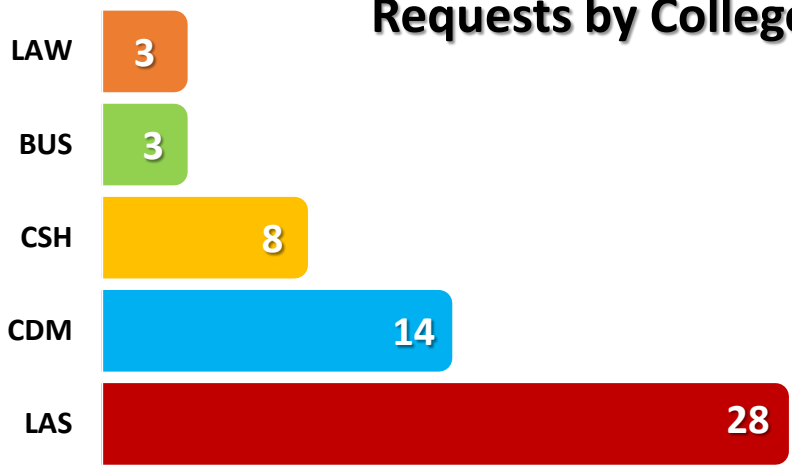


Assistance and Support

Breakdown of Services for RAs and non-RA Students

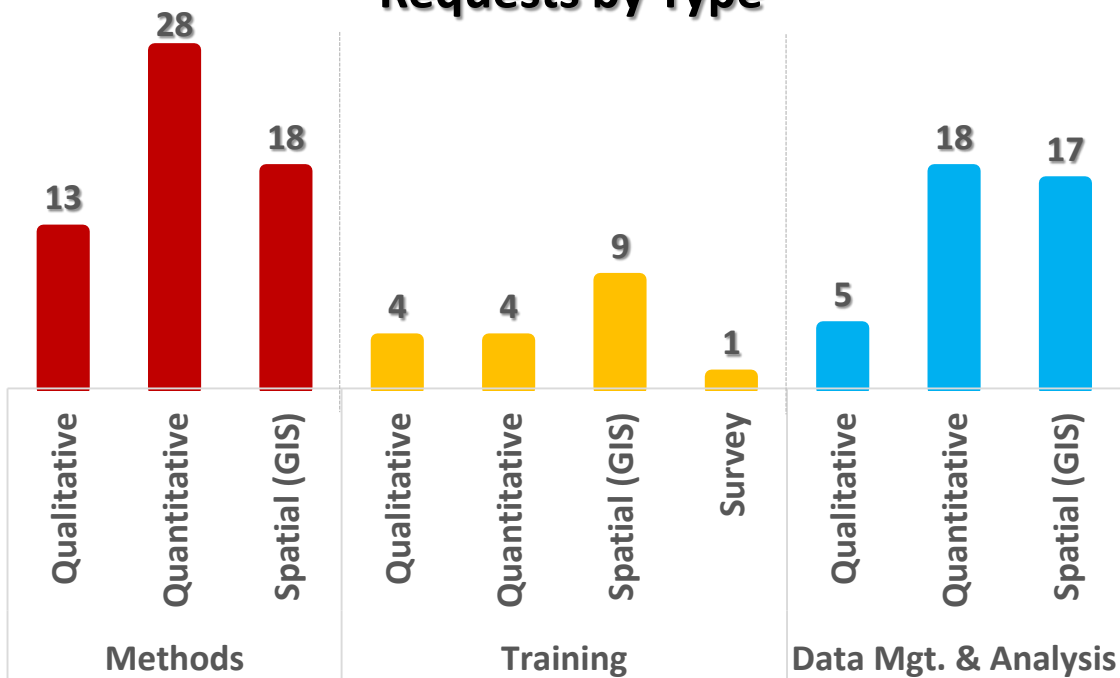
* A single request may include multiple types of service provided to students working directly or indirectly on research

Requests by Colleges



62 Students
56 Requests

Requests by Type



The SSRC provided expertise, software programs, and printing capacity that enabled an undergraduate senior thesis project to go forth. With the help of Nandhini Gulasingam, the student Meredith Bennett-Swanson developed separate papers presented at the Midwest Political Science Association (a professional conference) and at the Illinois Political Science Student Association conference, for which Meredith's paper on news coverage of the Black Lives Matter movement won the best undergraduate paper award for 2017. In addition, a version of Meredith's paper for the MPSA was published in the LAS's journal of student work, *Creating Knowledge*. Without the assistance of SSRC instruction and resources, Meredith would have been unable to develop a geographic analysis of news coverage across states. Thanks a ton for your time and effort!

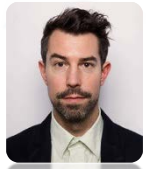
- *Wayne Steger (Professor, PSC)*



The SSRC has been a fantastic model for collaborative work at DePaul, one that we particularly looked to when we started Studio CHI last year. The dynamic mix of presentations of scholarship but also student involvement is something that is well worth supporting. Nandhini Gulasingam has been crucial in this regard, specifically for me in connecting a student GIS service learning class to my research needs for a project modeling the analysis of spatial information, construction activity, and labor. Indeed, it was so successful that I used two student projects as illustrations in a prominent peer-review article that I completed on an historical dimension of this project. The students, guided by Nandhini and with the SSRC as an example, did excellent work that made a real impact on the intellectual analysis.

- *Paul Jaskot (Professor, HAA and Director, Studio CHI)* **8**

Testimonials



The assistance and services the SSRC provides have been an absolute necessity in order to produce the majority of work in my creative practice. I have had access to AV equipment that has allowed me to produce numerous works, which without the help of the SSRC simply would not be possible. Greg Scott has been an invaluable collaborator and generous with the expertise and care he provides through his leadership at the SSRC. Linda Levendusky has been integral in every grant application I have produced while at DePaul, offering critical feedback and thoughtful editing in my applications. Through this process I have learned how to best position my work and clarify my ideas. The SSRC is one of the most valuable resources provided by the college and I am grateful for their support.

- Zack Ostrowski (Associate Professor and Graphic Art Area Head, AMD)



Without the generous support and guidance of the SSRC, especially Nandhini Gulasingam, I could not have completed my recent research project now published as a special issue of *Historical Geography* entitled "Spatial Art History in the Digital Realm" (v.45 2017). As I prepared maps for my article "Extrapolating Influence: The Challenges of Mapping the History of ARC and Artemisia Galleries, Chicago (1980-1985)," Gulasingam provided extensive assistance and also helped pair me with an undergraduate research assistant who expanded my databases and created additional maps for the article. The Social Science Research Center is an incredibly important resource for faculty by finding many ways to sustain research projects despite significant teaching and service loads at DePaul.

- Joanna Gardner-Huggett (Associate Professor and Chair, HAA)



Dr. Bishop-Royse was extremely helpful by training me on the NVivo software particularly focusing on specific areas of the software that are less used by other researchers in the University as well as providing me access to use of the software for my ongoing projects. Her wisdom was extremely helpful in planning out the data analysis portion of my project.

- Nick Kachiroubas (Associate Teaching Professor, SPS)



Jessi Bishop-Royse consulted on the joint LAS-CDM "Reading Chicago Reading" digital humanities project. Her advice was instrumental as we began plans combining survey sampling and geography, particularly how to determine what might be the most effective kinds of questions to ask and in what format.

- John Shanahan (Associate Dean, LAS and Director of Liberal Studies and Associate Professor, ENG)

Testimonials



It's hard to say enough good things about Greg Scott and the SSRC. The Center that Greg runs truly supports faculty research and projects in a meaningful way, and I know I can always count on him, personally, should I need any sort of help — from videography to art-direction to a general consult for advice about how best to set up and run various technical aspects of an event I'm planning. Greg and the SSRC were indispensable, for instance, when the DePaul Humanities Center invited actor, writer, and magician Ricky Jay to campus last fall. Greg worked with us not only to provide the audio-visual equipment we needed, and had been requested by Mr. Jay, but brought his expertise to bear on solving numerous technical challenges for that event. At other times, when we're lucky enough to get Greg himself video-recording an event for us at the DHC, the quality of the finished product is so astronomically better than when we have anyone else film our events that it makes us rethink whether we should make those other videos available on YouTube, even. He shoots our events like a documentary, making interesting, creative, and thoughtful decisions about the process rather than just setting a camera up on a tripod and letting it roll. Also, I was honored to be part of a public event planned by the SSRC last year as well: "Speaking in Light and Dark." Under the auspices of the SSRC, and planned by Greg, an interdisciplinary group of DePaul professors came together to talk about how the themes of light and dark manifest in their work, all while in the beautiful setting of Cortelyou Commons — staged with no artificial light. Greg had thought through the afternoon/evening so perfectly that the sun was setting outside while we spoke, letting the darkness settle gently into every corner of that magnificent space, until, finally, we enjoyed a reception in virtual darkness with the speakers and audience members experiencing rather than merely abstractly philosophizing about how light and dark inform our lives, our work, and our way of being in the world. It was a brilliant idea, and a real honor to be a part of it all.

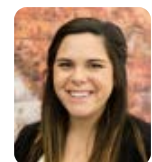
- H. Peter Steeves (Director, DePaul Humanities Center)



I am the recipient of a Humanities Center Fellowship and am working on an interdisciplinary project concerning the authenticity of provenance documentation for museum acquisitions of antiquities. Nandhini Gulasingam has been extremely helpful to me in identifying and providing the right students to construct the database analyzing close to 1,000 museum acquisitions. She also helped modify the database for students to collect data. These students will also be assisting in creating visual representations of the data that have been collected. I will be using this research and analysis in completing my fellowship project and the results will be published in a forthcoming article.

- Patty Gerstenblith (Distinguished Research Professor, LAW and Faculty Director, Center for Art, Museum & Cultural Heritage Law)

Testimonials



Dr. Bishop-Royce was instrumental in consulting with me on NVivo software and qualitative analysis. She oriented me to the software using sample data. She answered high-level questions about ascertaining trustworthiness of qualitative data. She was professional, highly organized, and gave expert advice. My consultation with her was invaluable in the development of an ongoing research project.

- Shannon Simonovich (Assistant Professor, NSG)



The SSRC was instrumental in providing a video-tape of the live performance of "Harlem Renaissance Remembered" at Old Town School of Folk Music for Black History Month in 2017. With Greg Scott's assistance, I was able to share 10 copies of the DVD with cast members. Fenger High School instructor Jake Spangler shared copies of a live impromptu poetry reading by a Fenger student who attended the show, as captured on tape. I'm very grateful to SSRC and to Greg Scott for putting this together and following up.

- Jonathan Gross (Professor, ENG)



I worked with Nandhini Gulasingam and Greg Scott at SSRC in the initial stages of a research project to gather information that would enhance ongoing studio work that I am performing in the neighborhood of Edgewater. They met with me on several occasions providing invaluable input and advice that helped to clarify what could be achieved, what resources were available, and what would need to be done to meet various goals for the research side of the project.

- Thomas Denlinger (Professional Lecturer, AMD)



I'm appreciative of the assistance that Jessica Bishop-Royce provided me during 2017. I have been in the process of developing my NVivo skills over the past few years, much of it with her assistance. In 2017, she was able to assist me in preparing new documents for a new data set. Not only did this allow me to begin a new research project, but her assistance has allowed me to assist others in the Department of Management and Entrepreneurship with enhancing their NVivo skills. One of my colleagues was on a University Research Council leave and, with my assistance, which is based on Jessica's assistance, was able to analyze over 1,000 documents using in NVivo.

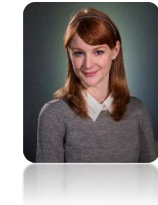
- Helen LaVan (Professor, MGT)

Testimonials



Dr. Jessica Bishop-Royse consistently provides outstanding statistical assistance and guidance to my research project and also provides NVivo training to my doctoral students who are conducting qualitative research. She also actively participates in manuscript writing for the statistical section of the paper. We have published several original research papers in peer-reviewed professional nursing journals.

- Joe Tariman (Asst. Professor, NSG)



As a department that relies heavily on technology, without a dedicated Technology Specialist, we were grateful that Nandhini was able to assist us with some of our programming needs. We appreciate all of her insight and assistance!

- Alexx Smith (Sr. Administrative Assistant, AMD)

Training

Software

Qualitative (NVivo, ATLAS.ti)

Quantitative (SPSS, SAS, STATA)

Spatial (ArcGIS)

Film and Audio Data Capture, Management and Analysis (FCP, FCE, PT, etc.)

Data Management (Qualitative, Quantitative, Spatial)

Customized Technology Training

Research

Research Design (Qualitative, Quantitative, Spatial, Media)

Data Collection (U.S. Census, American Community Survey Data, PUMS, ICPSR)

Grantsmanship (ORS/IRB/DEV)

Research Ethics (ORS/IRB)

Compliance — Human Research Subjects Protection Guidelines

Developing a Research Agenda

Navigating Systems (ORS/IRB/CGIA/OGC)



Resources

 **854**
Software Usage

Software



Qualitative	Quantitative	Survey	Specialty	Video
NVivo 10.0	SPSS 23	REDCap	ArcGIS 10.4	Adobe Premiere Pro
ATLAS.ti 7	SAS 9.4	Qualtrics	Stat/Transfer 12	Sony Vegas
HyperRESEARCH	Mplus 6.0		EndNote X1	
HyperTRANSCRIBE	LISREL 8.8		Konexx-	
Express Scribe	STATA /SE 13		Phone2PC	
	R 3.2.2			

 **78**
Equipment Usage

 **35**
Users

Equipment



Hardware	Audio-Visual
iMac (14)	Digital Cameras and Accessories
PC (11)	Digital Recorders
HP LaserJet B&W Printer	DVD/CD Burner and Label Maker
Epson Color Scanner with OCR Software	Tripods
Laptop	Audio Accessories
Transcription Pedal	

Resources



635

Lab Usage (*# of times*)



5

Ongoing Projects Using Lab Space



213

Conference Space Usage (*# of times*)

Space

Macro Lab*

Equipment	iMac (15), PC (7), HP LaserJet B&W Printer, Epson Color Scanner, Copier, Projector
Software	Qualitative (NVivo, ATLAS.ti) Quantitative (SPSS, SAS, Mplus, STATA) Spatial (ArcGIS) Film (Adobe Premiere)

Micro Lab*

Equipment	PC (4), DVD/CD Burner and Label Maker
Software	Qualitative (NVivo, ATLAS.ti) Quantitative (SPSS, SAS, Mplus, STATA) Spatial (ArcGIS) Transcription (Express Scribe, Konexx-Phone2PC)

Conference Space*

Equipment	Smart Room Technology (LCD Panel, Projector, Laptop, DVD Player, Conference Phone) Webcam WiFi and Internet
-----------	---



* Labs are used in-person and remotely.

Programming

Mess Hall



Our Mess Hall series (totaling 24 held since 2013) invites DPU faculty or graduate student scholars to present their current scholarship — mess and all — to an audience of peers, students, or occasional outsiders. The informal atmosphere is meant to provoke discussion and suggest further direction and methodology or provide a dry-run for more formal conference or other presentations.

 **1**
Mess Halls

Shut up & Write



Shut Up & Write Tuesdays (SUWT) offers space in the SSRC conference room to DPU scholars from noon–2:00 pm each Tuesday for dedicated writing time outside their own offices or methodological, quantitative, or other help from SSRC Chief Research Methodologist Jessica Bishop-Royse.

 **25**
Sessions

Accountability Group



SSRC's ongoing Accountability Group supports primarily tenure-track LAS faculty in setting and reaching self-imposed professional and research goals, especially for projects without deadlines. The SSRC hosts biweekly, 30-minute meetings where members report on progress, plan goals, share tips, and celebrate successes.

 **20**
Sessions

Research Retreat



On March 20–23, the SSRC hosted three DePaul tenure-track faculty at an academic research writing retreat in Kenosha, Wisconsin for daily writing sessions, accountability meetings, and evaluation. Participants set their own retreat goals, whether revising manuscripts or drafting conference papers and presentations. This was the second year the SSRC organized and facilitated an academic research retreat for faculty.

 **1**
Retreat

Guest Lectures and Talks



SSRC staff presents guest lectures to DPU classes and group meetings, including invitational appearances about specific areas of expertise such as IRB, video ethnography, and research methods and techniques.

 **2**
Guest Lectures
and Talks



49

Total Programming Sessions

Programming – Mess Hall

... in 2016

Managing the 'Natural Rapacity' of the Rich: Adam Smith on Economic Inequality

As a political scientist interested in the history of economic inequality and political thought, David Lay Williams (Professor, Political Science) has utilized the SSRC's Mess Hall forum to get feedback from a multi-disciplinary audience for the book he is writing, 'The Greatest of All Plagues': Economic Inequality in Western Political Thought. His first presentation previewed a chapter on Adam Smith revealing the economist's surprising concern for the social pathologies associated with commercial society. Williams' conclusion: the greater the economic gap separating citizens, the harder it is to establish Smith's 'circles of sympathy' facilitating harmonious social relations.



... in 2017

The 'Greatest of All Plagues': Plato on Economic Inequality (Oct. 19)

In his second Mess Hall appearance, Williams presented the first chapter from his book which traces the sources of Plato's concerns about inequality and their relation to his republics. He disputed Plato's reputation as one of the least egalitarian philosophers, pointing to the extensive series of measures he devised in *The Laws* to prevent inequality and limit its damage to virtue, civic harmony, and the stability of the state.

I just wanted to thank Linda, again, for arranging for and promoting my talk this past Thursday. We had a nice audience, I think, and really good questions. It gave me valuable perspective on how non-specialists might respond to my book — which really is invaluable. It also helped to connect me with others on campus working in related areas. So I really am very grateful. I'll let you know when I have another chapter ready for the Mess Hall!

- David Williams (Oct. 23, 2017)

... in 2018

Through the Eye of a Needle: Wealth, Greed, and Inequality in the New Testament

Williams will share his latest chapter with a Mess Hall audience in 2018, this one featuring an investigation of the predatory lending practices and extremes of economic inequality in Jesus' Roman Palestine. He is contrasting the difference in attitudes Jesus and Paul displayed towards wealthy, pious Christians. Williams is writing the book for Princeton University Press.

Scholarship



Journal of Video Ethnography

Six films were submitted from Austria, Bolivia, Netherlands, UK, and North America to the SSRC's Journal of Video Ethnography (JVE) in 2017. This unique, on-line ethnographic film journal is aimed at encouraging the acceptance and raising the standards of ethnographic video for use as a valid method of social scientific inquiry. The films, representing a wide spectrum of topics and approaches, included four from outside the U.S. Subscriptions to the free journal nearly doubled in 2017, with domestic and foreign subscribers surpassing 1,640; 59.4% were linked to higher education.



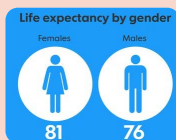
Erotic Labor Market Survey (ELMS)

The SSRC is participating with community collaborators on a first-ever study, national study of sex trafficking in the erotic labor market in the U.S. Jessica Bishop-Royse and Greg Scott presented findings from the Erotic Labor Market Survey at the Annual Meeting of the Society for the Study of Social Problems in Montreal in August and plan to submit an article to the journal "Social Problems" in 2018.



Seasons of Violence

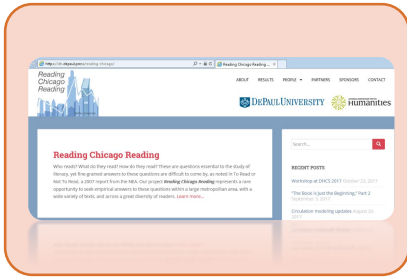
Authors Jessica Bishop-Royse of the SSRC and Noam Ostrander (Social Work) have been collaborating on a paper on "Weather-Related Patterns in Homicide Mortality in 100 US Cities, 2009 – 2012". This year they reconceptualized the project, adding new data and analyses. In September Ostrander presented preliminary findings at the International Conference on Urban Health in Coimbra, Portugal. Bishop-Royse will discuss it at the Southern Sociological Society's 2018 annual meeting in New Orleans. They also plan to submit it in 2018 to the journal, Population Research and Policy Review.



Illinois' Lost Life Expectancy

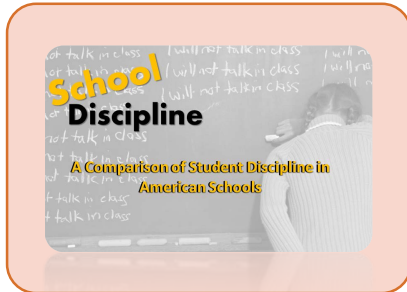
Following a successful DPU IRB agreement, an application requesting vital registration data was submitted to the Illinois Department of Public Health (IDPH) in July 2017. The project is investigating cause-specific mortality trends and life expectancy in Illinois. The data agreement is still pending with IDPH.

Scholarship



Reading Chicago Reading

DePaul's digital humanities project, Reading Chicago Reading, is combining research methods from Computer Science and the Humanities to examine the Chicago Public Library's One Book, One Chicago program. Jessica Bishop-Royse provides ongoing methodological consultation to the project's principal investigators, Associate Dean John Shanahan (English) and Professor Robin Burke (CDM), including advice on data collection and statistical support. Nandhini Gulasingam has been contributing GIS mapping technology. The project aims to develop a set of tools for scholars and libraries to learn about patrons' reading behavior.



Discipline Rates Study

This joint project between Professor William Sampson (Public Policy Studies) and Nandhini Gulasingam is comparing discipline rates between charter and regular public schools in Chicago, New Orleans, Philadelphia, and Detroit. Nandhini collected the school-level data and did preliminary analysis and visualizations. In May, she, Sampson, and a Public Policy Studies student presented preliminary research findings in Athens, Greece at the International Conference on Sociology organized by the Athens Institute for Education and Research.

Scholarship



Journal of Video Ethnography

<http://videoethno.com/>



Films

	Films			Countries
	Total	USA	Outside USA	Total
Submitted	6	2	4	5



People

	People			Countries
	Total	USA	Outside USA	Total
Reviewers	155	95	60	23
Subscribers	1,641	830	811	82
Visitors	13,664	N/A	N/A	175

 **155**
Reviewers

 **1,641**
Subscribers

 **13,664**
Visitors

 **197,888**
Views



Subscriber Industry

Total Subscribers	
Film/Media	173
Higher Education	975
Research	212
Other	281

* All statistics are for 2017 only

Special Projects

Special projects are one- or short-term, non-research projects done upon request.

Art, Media, and Design

From mid spring to early fall, the SSRC helped AMD set up their Macs and accessories at their labs. Nandhini Gulasingam helped AMD identify their current and future software and hardware needs along with a procedure for streamlining their process and maintaining their computer labs. The project entailed meeting with other departments that have Macs and soliciting input from Information Services (IS). Nandhini assisted AMD through all phases of the project, including installation of the installation activities including installing specialized software, troubleshooting, and providing software installation instructions. Her consultation included a comparison of applications for usage and aesthetics to guide AMD's future decision-making.

Art, Media, and Design



Geography

SSRC assisted the Department of Geography with a proposal to offer Geographical Information Systems (GIS) software university-wide. Nandhini Gulasingam worked with Geography's GIS Coordinator Cassandra Follett to brainstorm needs, estimate costs, and identify options for obtaining an ArcGIS package that will most benefit Geography, the university, and students individually. She also worked with IS to automatically give DPU students enrolled in GIS courses access to GIS software via the university's virtual labs.

Geography



Faculty Needs Assessment Findings

The SSRC's Faculty Needs Assessment survey was distributed by an email from the Dean of DePaul's Liberal Arts & Social Sciences to LAS faculty. Data collection occurred from June–August 2017. No responses were required to progress through the survey, so the 106 responses vary in degree of “completeness”. The instrument primarily contained radio-button selection statements, asking participants to identify whether specific items were important to their research.

Important Tools

Data Collection	24.5%
Mixed Methods	22.6%
Comparative/Historical Methods	20.7%
Transcription	15.1%
Ethnographic Methods	15.1%
Working with Multimedia	15.1%
Using Geographic Data	14.2%
Map Construction	14.2%
Statistical Methods	12.3%

Scholarship Activities

Locating Funding Resources/Deadlines	29.2%
Manuscript/Proposal Writing Support	23.4%
Literature Searches/Locating References	19.8%
Grantmanship/Grant Administration	17.9%
Data Visualizations	15.1%

Technical Assistance

Manuscript Editing and Review	39.6%
Indexing	27.4%
Training Students/Research Assistants	22.6%
Charts and Figures Construction/Formatting	15.1%
Data Collection/Data Entry	12.3%
Supervising Student Research Assistants	12.3%
Database Management	12.3%
Visual Data Editing and Management	11.3%
Software Selection and Training	11.3%

Conferences & Specialized Workshops



- ✦ Led two-day workshop on “Making Ethnographic Documentary Films” at the annual meeting of the International Visual Sociology Association, Montreal, Canada, June
 - ✦ Organized one-day workshop on “Using Images Effectively in Harm Reduction Social Media Communication” for Chicago Recovery Alliance, September
-



- ✦ Presented at the Society for the Study of Social Problems, Montreal, Canada, August
 - ✦ Co-author presentation at the International Conference on Urban Health, Coimbra, Portugal, September
 - ✦ Chaired session at the Population Association of America, Chicago, April
 - ✦ Presented mini-workshop on Stata File Management , Chicago, February
-



- ✦ Presented at the Annual International Conference on Sociology findings comparing student discipline rates between charter and regular public schools in four U.S. cities, Athens, Greece, May
- ✦ Presented at the DePaul Health Disparities and Social Justice Conference on “Using Geographic Information Systems for Health Research — Mapping and Analyzing Health Data”, Chicago, August

Events

Speaking in Light and Dark

Inspired by UNESCO's International Year of Light, we hosted an event under all-natural lighting in Cortelyou Commons as the sun set at 4:48 pm on January 18. Four DPU faculty talked about the intersection of light and dark in their work. Steve Harp (AMD) asked whether dreams should be considered light; Daniel Makagon (Communication) recounted taking students on a night class into the nighttime city and discussed research into punk music performances that took him out of dark basements and into daytime performance spaces; Bill Sampson (PPS) considered why some poor non-white students fail while others living under the same conditions thrive; and H. Peter Steeves (Phil) offered an illustrated, rapid-fire history of the universe and the minor position our planet —and human existence —hold within it.



Research Show and Tell

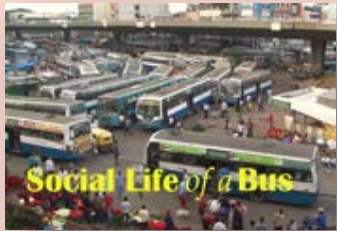
We topped off the academic year with a show-and-tell by four faculty who utilized a variety of SSRC resources in 2017 to further their research projects. Robin Burke (CDM) outlined the new data sources, tools, and research questions being used to guide DePaul's ongoing Reading Chicago Reading project; Shailja Sharma (Refugee and Forced Migration Studies) discussed the trials of devising a new research plan from scratch; Ben Epstein (Poli Sci) shared his tactics for surviving the often disheartening R&R editing and writing process; and Sarah Read (formerly of Writing, Rhetoric and Discourse) explained her system for juggling two unrelated research agendas.



Events

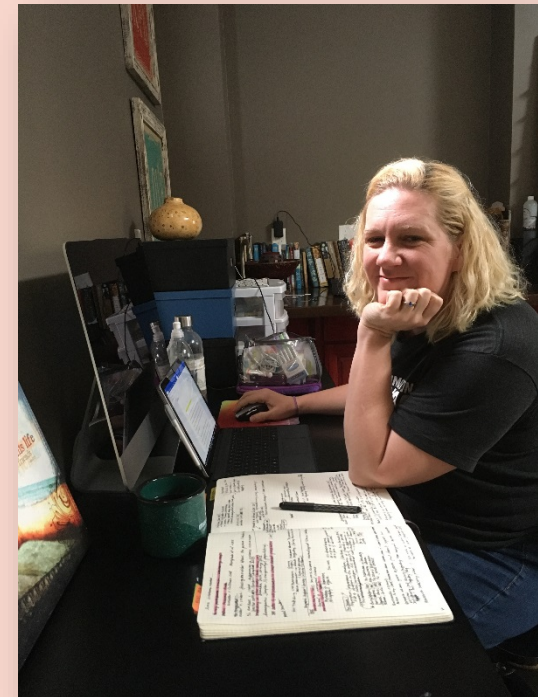
JVE at American Anthropological Association

Jessica Bishop-Royse represented the Journal of Video Ethnography (JVE) at a vendor booth at the 116th annual meeting of the American Anthropological Association in Washington, DC in November to showcase and publicize this unique, on-line journal (see page 18 to learn more about JVE).



Research Retreat

Over spring break in March, Jessica Bishop-Royse facilitated a weekday research retreat to Kenosha, Wisconsin for three DePaul faculty. The four-day event was structured around regular accountability meetings, goal setting, and writing sessions



4

Total Events

Information Sharing



Blog: re/search

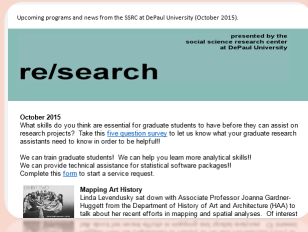
<https://ssrcdepaul.wordpress.com/>

Although the SSRC blog and newsletter share the name, re/search, they complement rather than mirror each other. The blog mainly features research-related essays and articles by SSRC staff.

 **5**
Posts

 **3,720**
Views

 **2,643**
Visitors



Newsletter

[SSRC Newsletters](#)

Our periodic newsletter brings research-related news and announcements about programs, events, and research opportunities to an internal audience of faculty and staff.

 **1**
Newsletters

 **7**
Articles



Facebook

[SSRC Facebook](#)

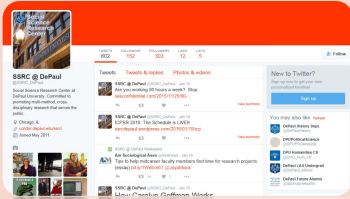
We use Facebook to announce research-related events, promote faculty scholarship, and share relevant articles and links to the DePaul Center community and the public. The majority of our audience is in Chicago.

 **6**
Posts

 **176**
Followers

 **11**
Likes

 **2**
Shares



Twitter

https://twitter.com/SSRC_DePaul

Like Facebook, our Twitter account is used primarily to share articles and links, promote SSRC and faculty activities, and connect back to our re/search blog.

 **11**
Tweets

 **341**
Followers

 **20**
Likes

 **129**
Retweet

Information Sharing

 **Jo Gardner-Huggett**
@JoannaGardnerHu

Apr 19

All the apps on my phone are disappearing, but I ran a query in ArcGIS without tears today! Thanks to Nandhini at @SSRC_DePaul



[View conversation](#)



John Shanahan
@Shanahan2005

Jun 02

@ReadChiReading update by @rburke2233 -- thanks @DePaulU @SSRC_DePaul! Our DH study of @1book1chicago, support by @NEH_ODH and @Azure



Staff



GREG SCOTT

Director Greg Scott, Ph.D., professor of sociology, combines quantitative/epidemiological and qualitative/ethnographic methods to research issues stemming from the interaction of structural, network, and micro-interactional forces in the illicit drug economy. His semi-traditional ethnographic and epidemiological research has led him recently into producing and directing documentary film and radio projects on the social, economic, cultural, political, and health issues that illicit drug users face. From 2003 to 2010 Greg was a member of DePaul's Institutional Review Board (IRB), the university-wide committee that oversees all behavioral and scientific research proposals from DPU faculty, staff, and students involving human participants to ensure that they meet federal standards of ethical conduct and subject wellbeing.

Email: gscott@depaul.edu



JESSICA BISHOP-ROYSE

Senior Research Methodologist Jessica Bishop-Royse, Ph.D., and adjunct faculty in the Department of Sociology, has substantial experience in quantitative inquiry. She came to DePaul after completing a post-doctoral fellowship at the Florida State University College of Medicine where she managed a large federally funded patient safety grant. She is interested in health disparities, infant and maternal health, health services, GIS, methods, and statistics. Jessi navigates between the fields of sociology, demography, epidemiology, medicine, public health, and policy. She is well-versed in data collection, Stata, quantitative research methodology, and statistics. She has experience with multilevel analyses, survival analyses, GIS, and multivariate regression.

Email: jbishopr@depaul.edu



NANDHINI GULASINGAM

Nandhini Gulasingam is SSRC's Senior Analyst for IT Solutions and adjunct faculty in the Department of Geography where she teaches graduate and undergraduate courses on Geographic Information Systems (GIS). At the SSRC, she manages GIS, database, web development, and data-related projects including the faculty research labs. She also consults on faculty research projects involving data processing, analysis, management, and visualization including GIS. She has an M.S. in Predictive Analytics, an M.S. in E-Commerce Technology, and GIS certification from DePaul.

She designed and compiled this annual report.

Email: mgulasin@depaul.edu



LINDA LEVENDUSKY

Projects Coordinator Linda Levendusky has a B.A. in journalism from the University of Wisconsin-Madison and came to DePaul after working as a news reporter and editor at City News Bureau and United Press International wire services in Chicago. At the SSRC, she copyedits journal articles, manuscripts, grant applications, and other documents related to faculty projects. She handles SSRC administrative matters and coordinates the "Mess Hall" series of informal presentations by DPU scholars soliciting peer feedback on manuscript drafts or conference presentations in process.

Email: llevendu@depaul.edu

Advisory Board



Molly Andolina
Assoc. Professor, PSC

Email: mandolin@depaul.edu



Cate Ekstrom (Ex Officio)
Director
Research Development and
Pre-Award, ORS

Email: cekstrom@depaul.edu



Susan Loess-Perez (Ex Officio)
Director
Research Compliance, ORS

Email: sloesspe@depaul.edu



John Mazzeo
Assoc. Professor, ANT and MPH
and Director of MPH

Email: jmazzeo@depaul.edu



Noam Ostrander
Assoc. Professor and Chair,
Social Work

Email: rostran1@depaul.edu



Zack Ostrowski
Assoc. Professor, AMD
and Graphic Art Area Head

Email: zostrows@depaul.edu



Ramya Ramanath
Assoc. Professor, SPS
and Chair of Intl. Public Service

Email: rramanat@depaul.edu