

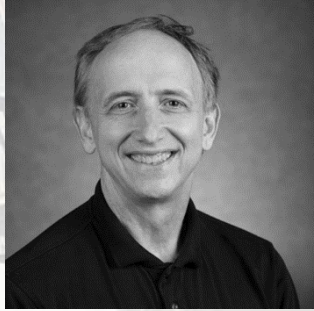


Webinar
Rivers of Opportunity
*25 Small and Mid-Size Cities
Adeptly Leveraging
Waterways*



Joseph Schwieterman, Ph.D.
William Kling, JD
Emily Hamilton
Chaddick Institute at DePaul University

DePaul University Team



Joseph P. Schwieterman, Ph.D.



William C. Kling, J.D.



Emily Hamilton

Guest Presenters



Dan Waldinger
Director of Parks & Recreation
Village of Mahomet.



Brian "Fox" Ellis
Director of Membership
& Outreach
Illinois Audubon Society

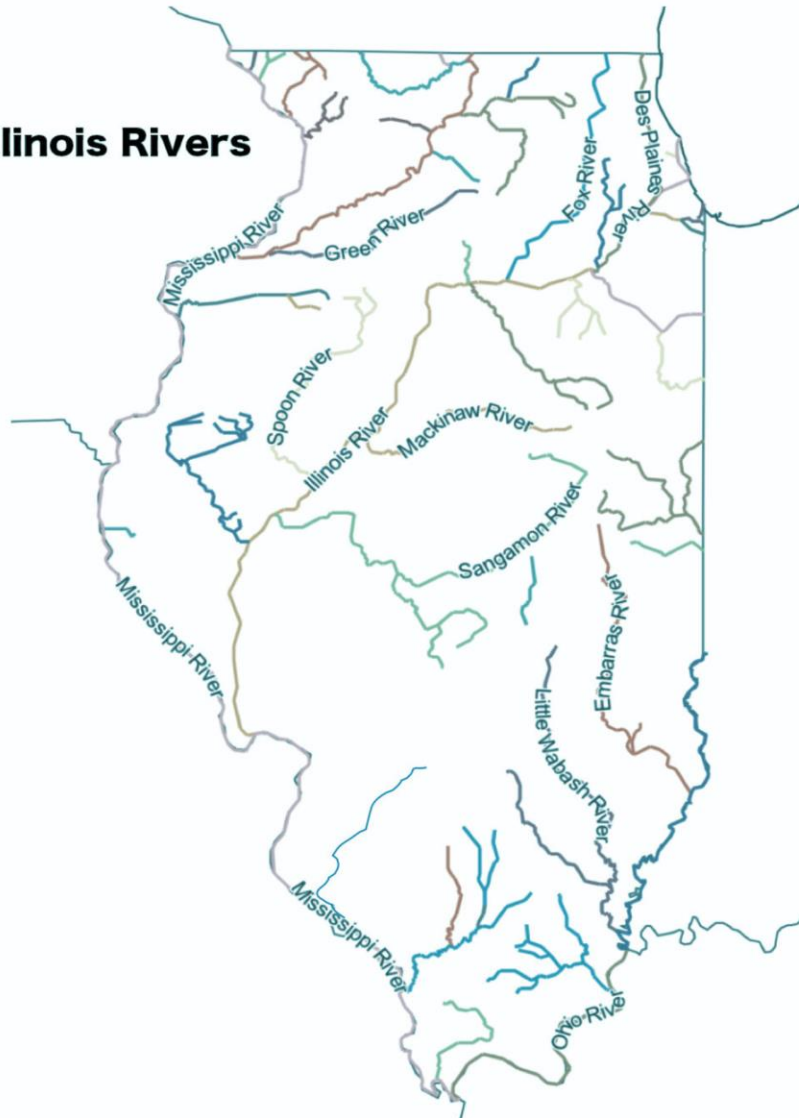


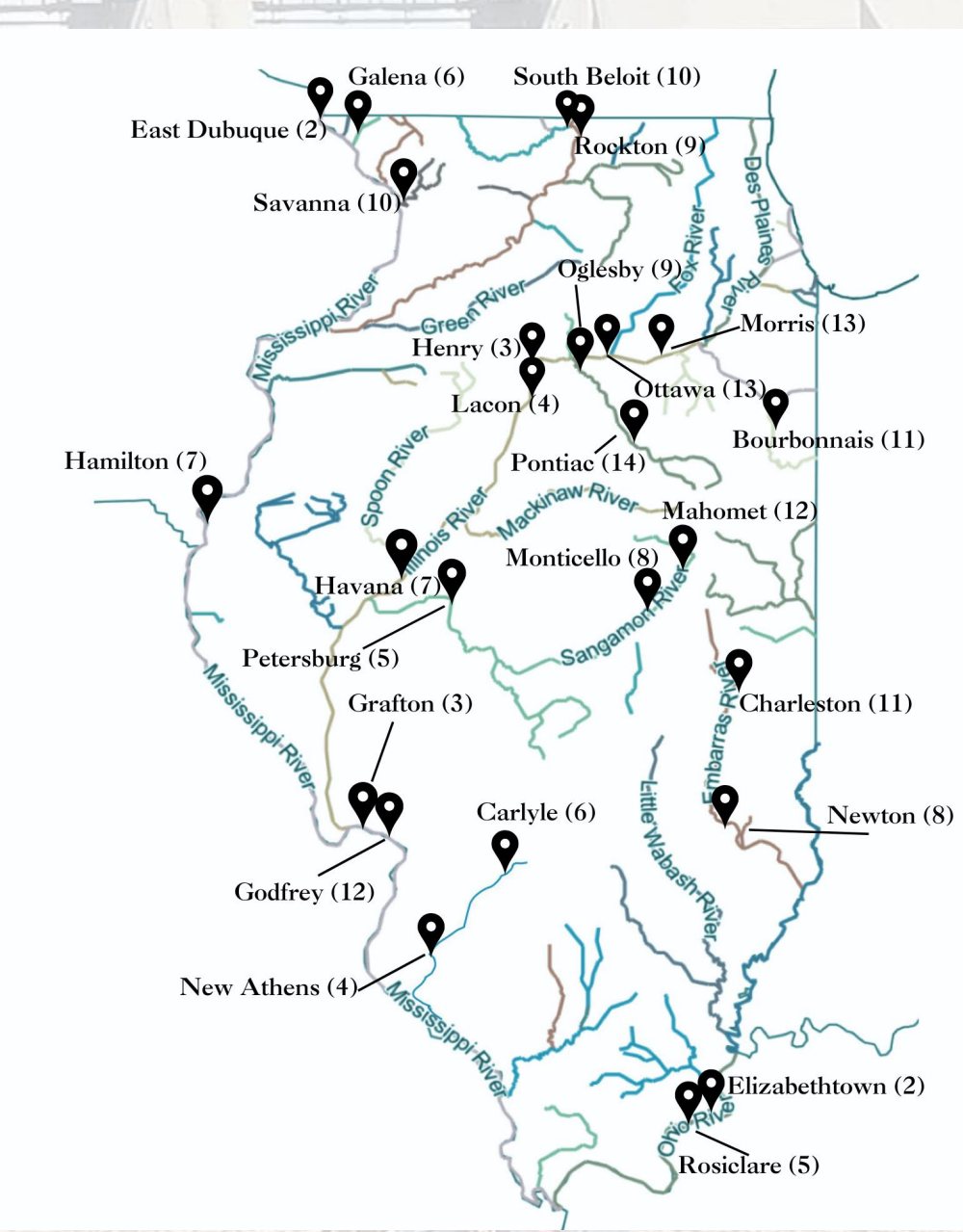
The National Great Rivers Research & Education Center



Hydrology of Illinois Rivers

Illinois Rivers

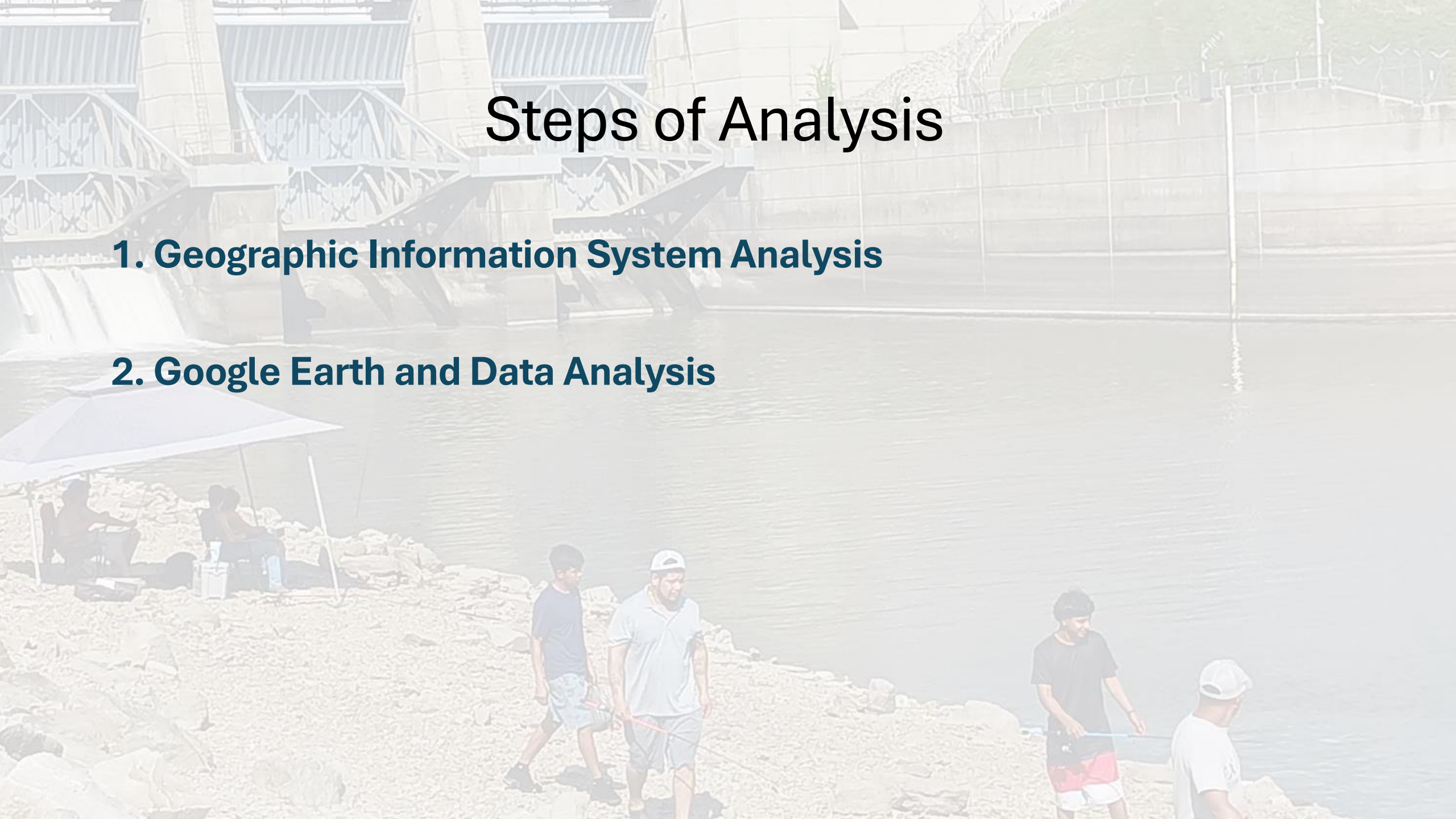


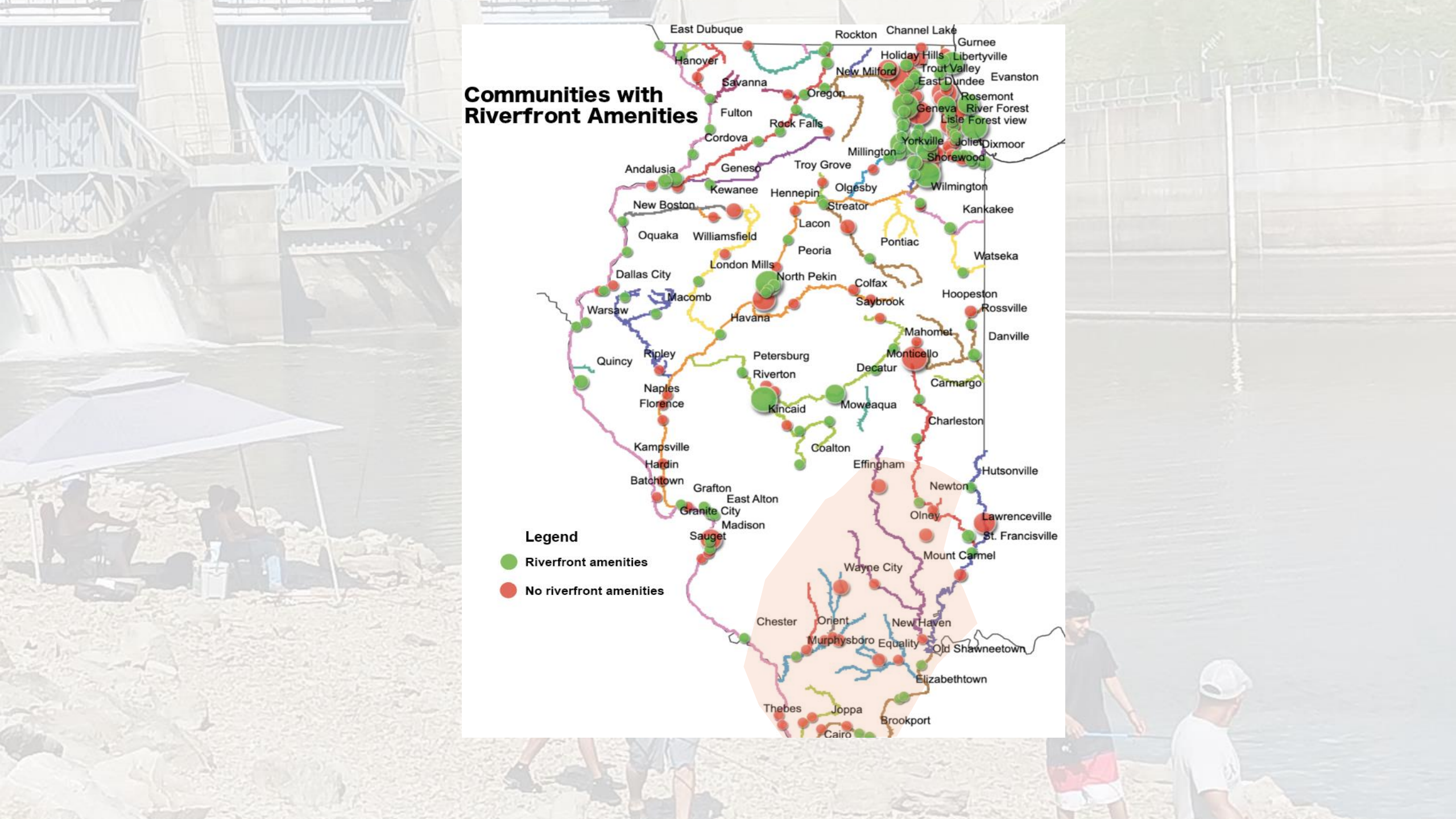


Steps of Analysis

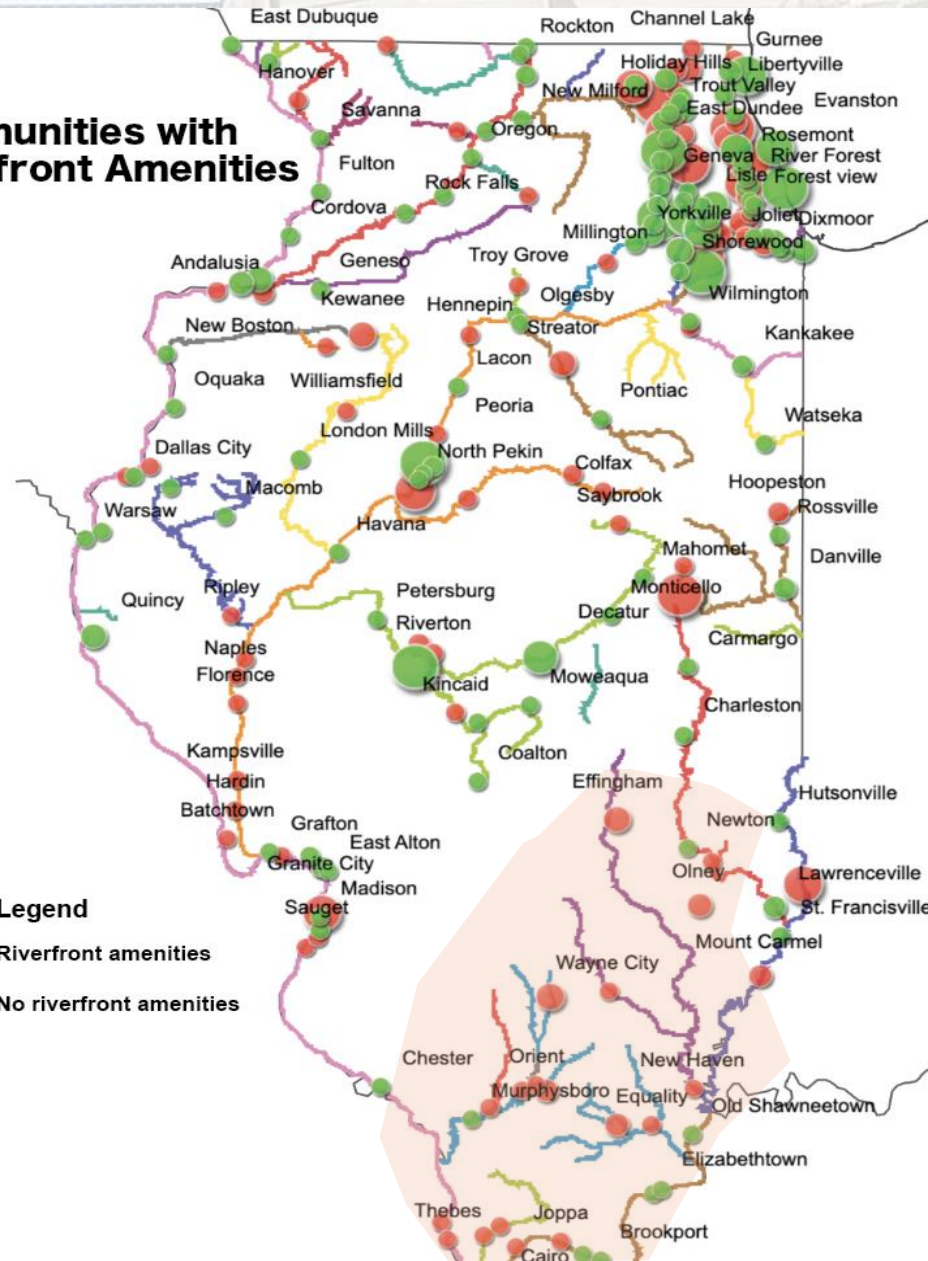
1. Geographic Information System Analysis

2. Google Earth and Data Analysis





Communities with Riverfront Amenities



Legend

- Riverfront amenities
- No riverfront amenities

An aerial photograph of Ottawa, Illinois, showing a dense residential area with a grid of streets. A large river flows through the center of the town. In the lower-middle section, there is a school complex with a blue-roofed building, a track, and a pool. The surrounding area is lush with green trees and grass. The text "Ottawa, IL" is overlaid in the bottom right corner.

Ottawa, IL

Grafton, IL



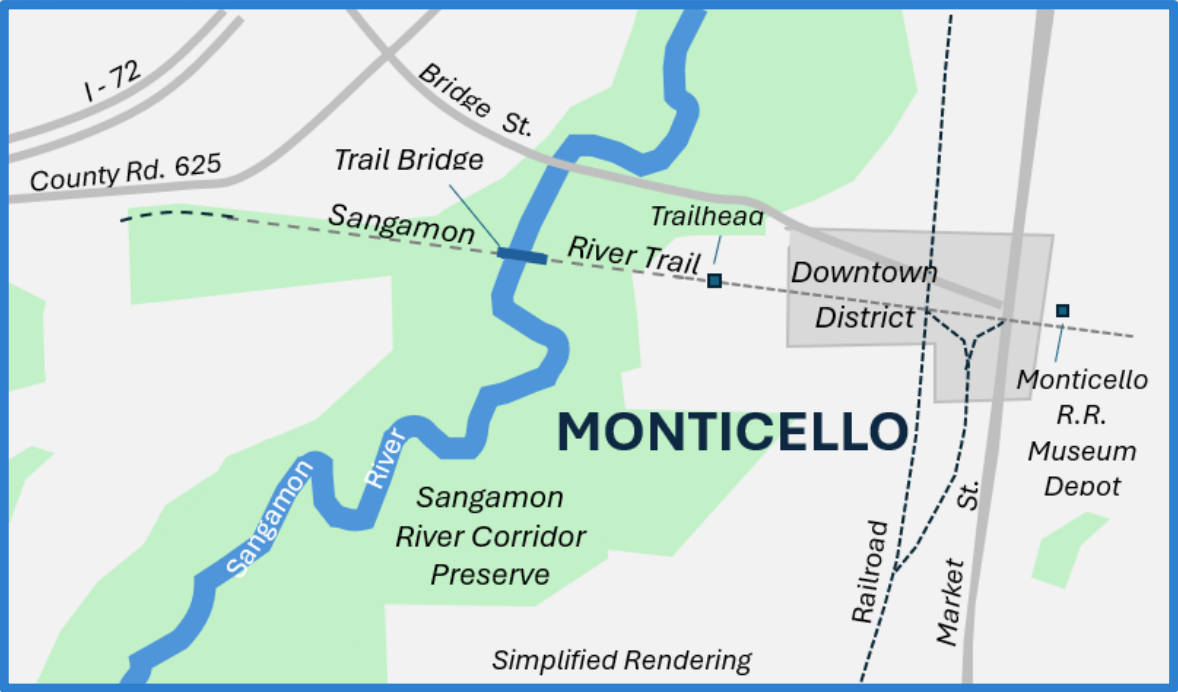
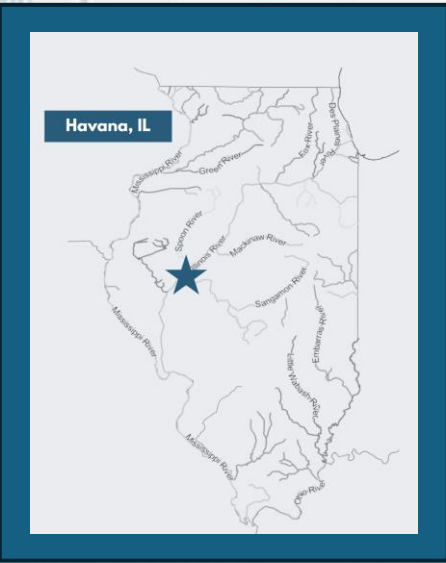
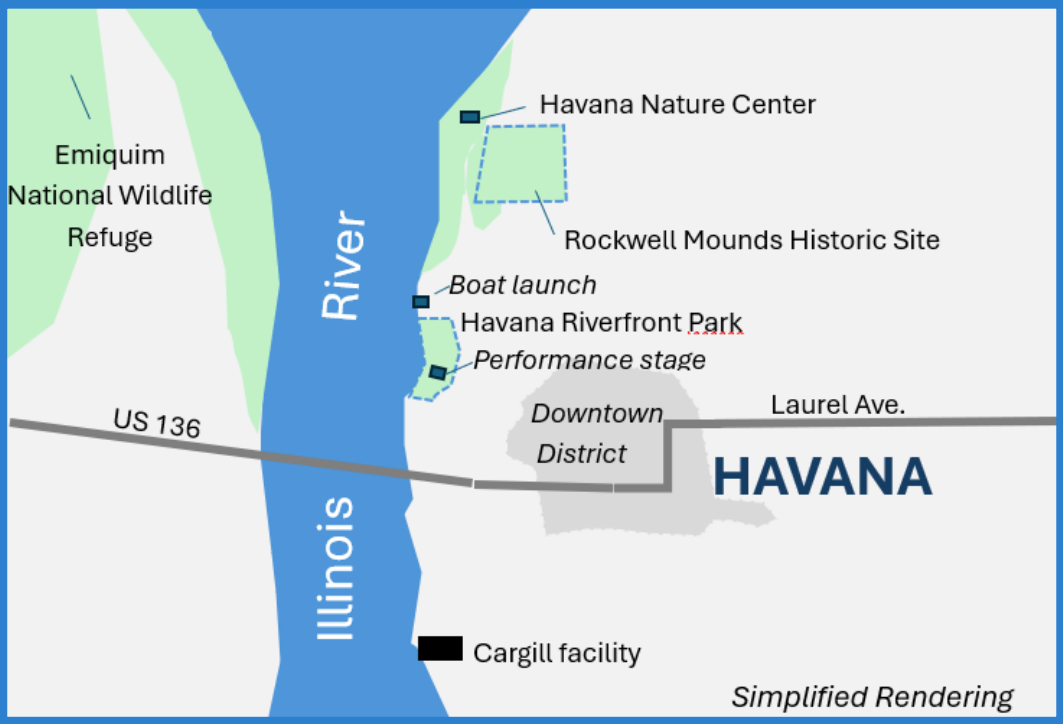
Steps of Analysis

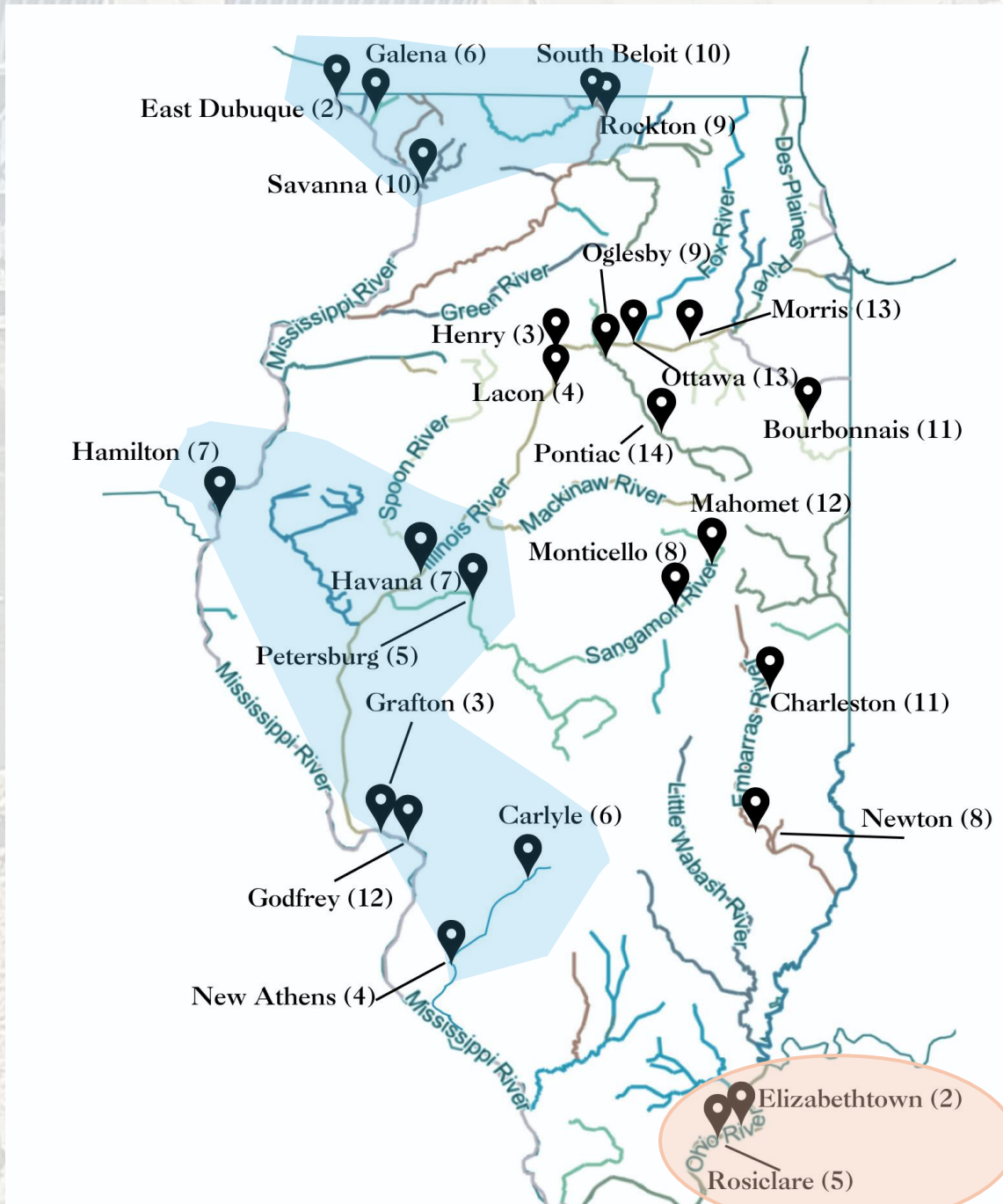
The background image shows a large concrete dam with multiple spillways. In the foreground, a river flows past a rocky shore where several people are gathered. Some are sitting under a white canopy, while others are standing and talking. The scene is brightly lit, suggesting a sunny day.

3. Create Contact List

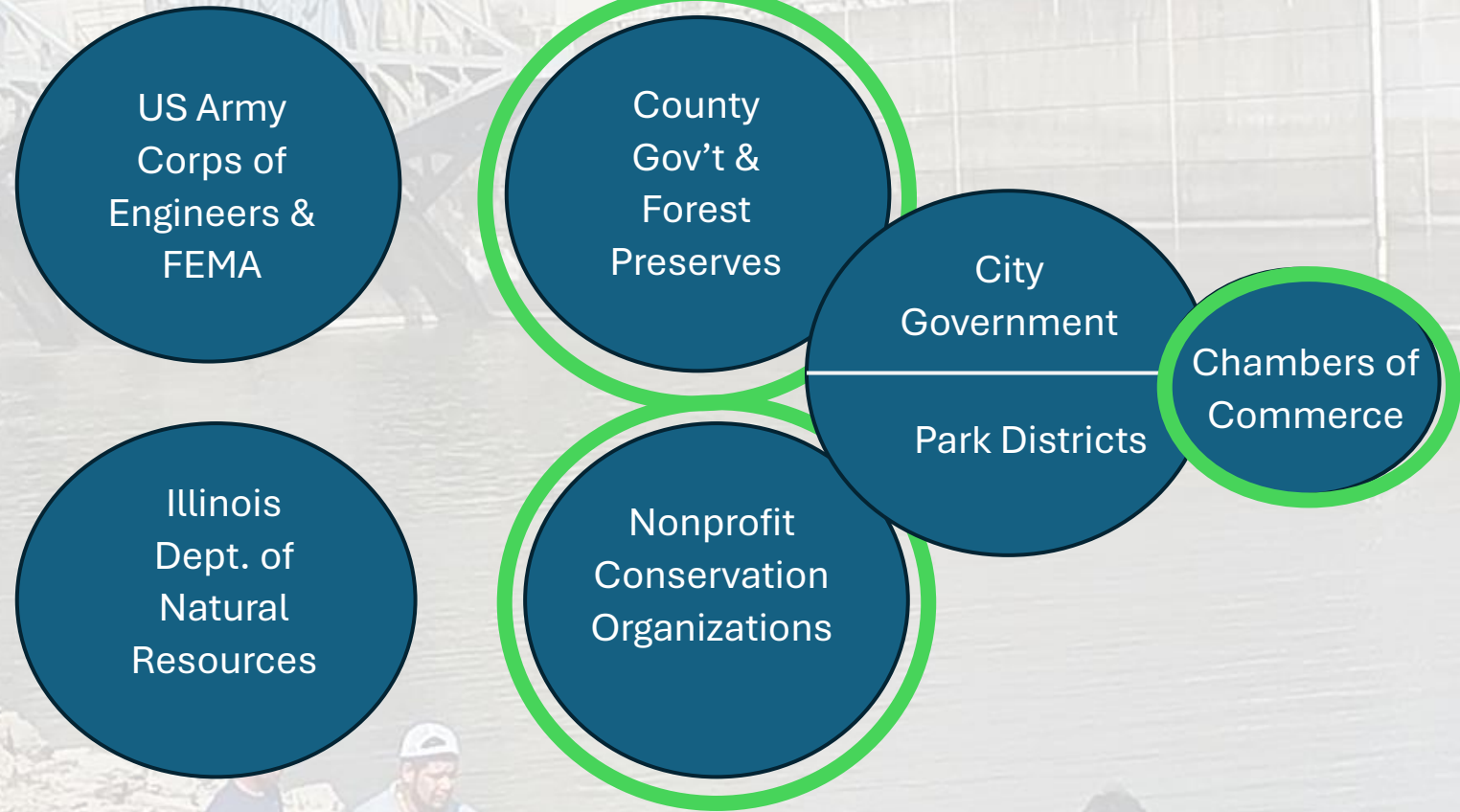
4. Create Custom Maps & Fact-Checking

5. Site Visits





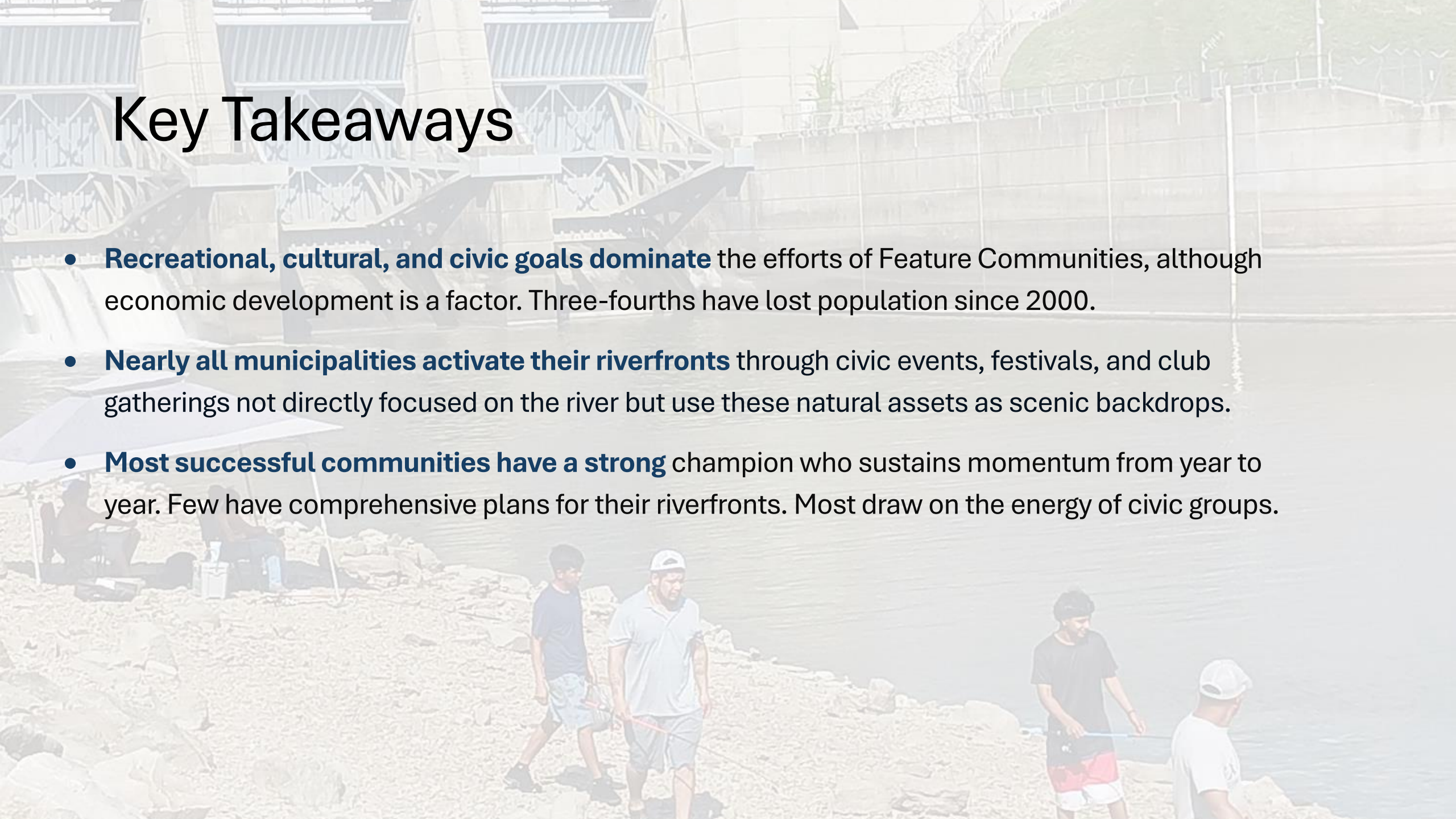
Institutional Landscape of River Policymaking

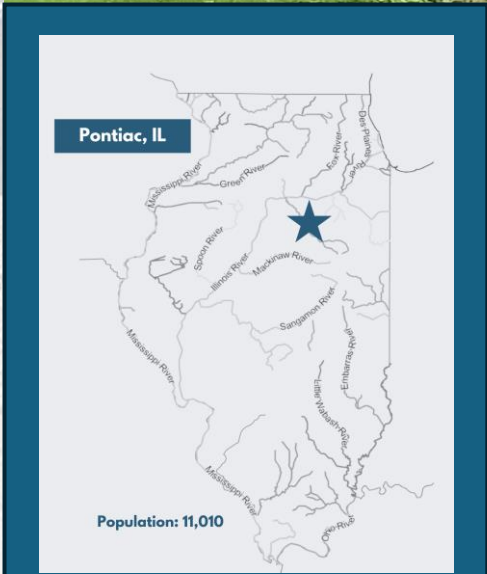
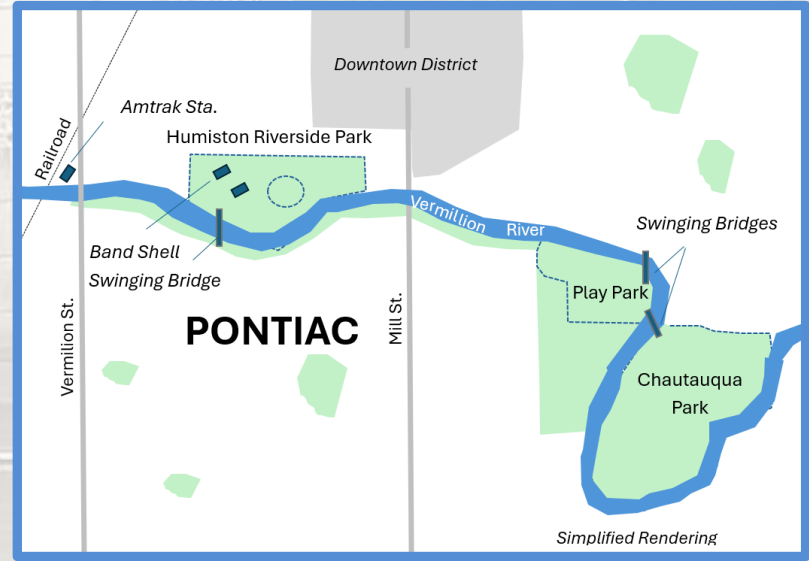
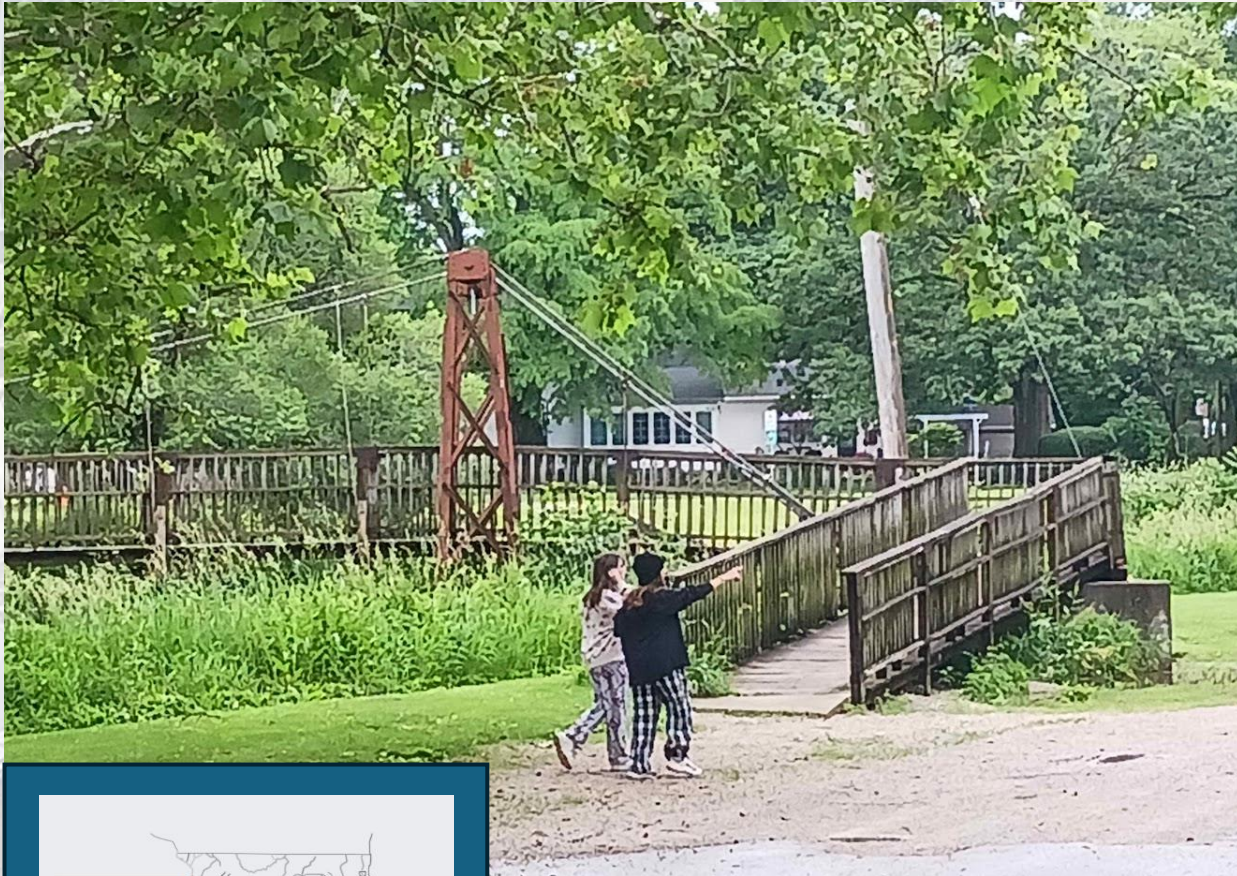


Strongest Municipal Relationships

Key Takeaways

- **Recreational, cultural, and civic goals dominate** the efforts of Feature Communities, although economic development is a factor. Three-fourths have lost population since 2000.
- **Nearly all municipalities activate their riverfronts** through civic events, festivals, and club gatherings not directly focused on the river but use these natural assets as scenic backdrops.
- **Most successful communities have a strong** champion who sustains momentum from year to year. Few have comprehensive plans for their riverfronts. Most draw on the energy of civic groups.



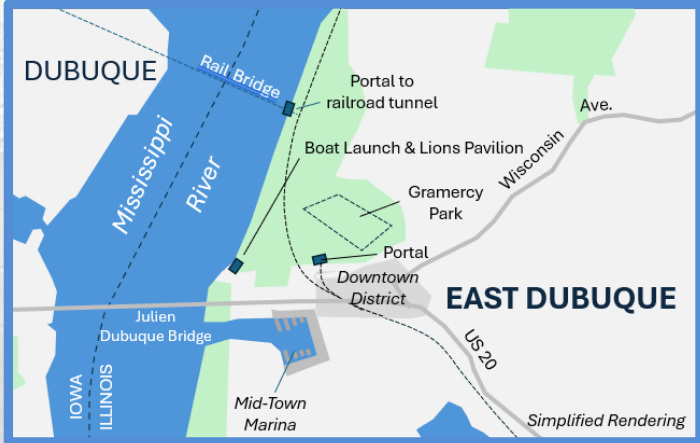


Pontiac, IL

THE CITY OF PONTIAC PRESENTS
ROCKIN' AT THE RIVER
A concert series at Humiston Riverside Park

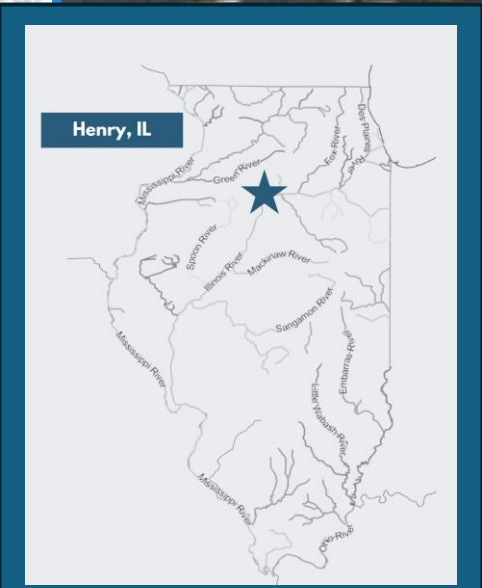
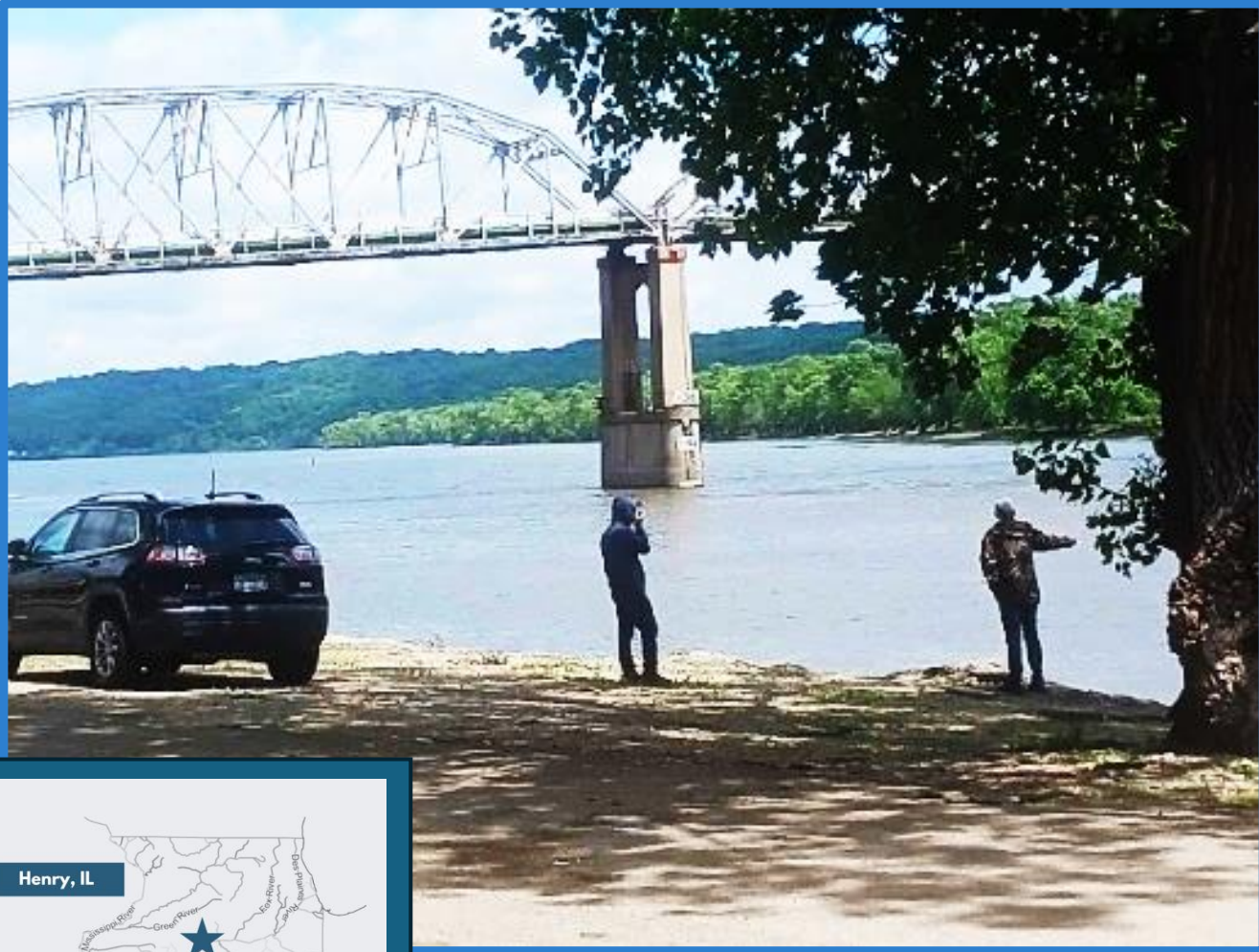
THE CITY OF PONTIAC PRESENTS
ROCKIN' AT THE RIVER

Rockin' at the River Summer Concert Series
1.3K likes • 1.5K followers



East Dubuque, IL

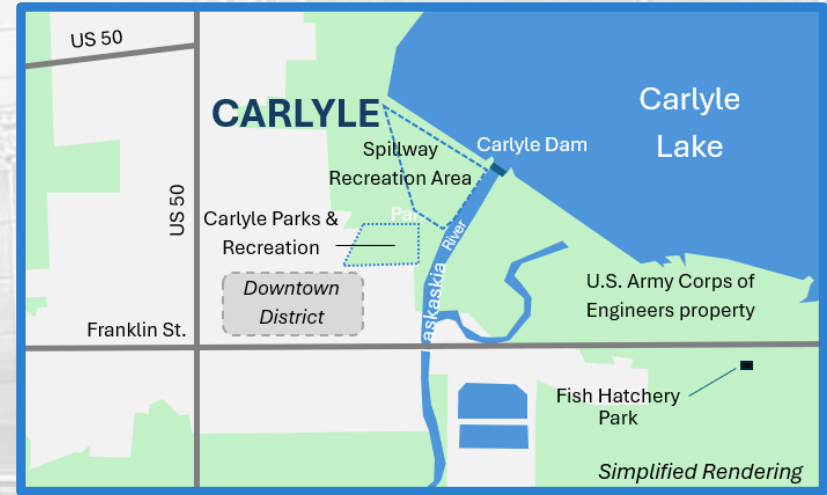




Henry, IL

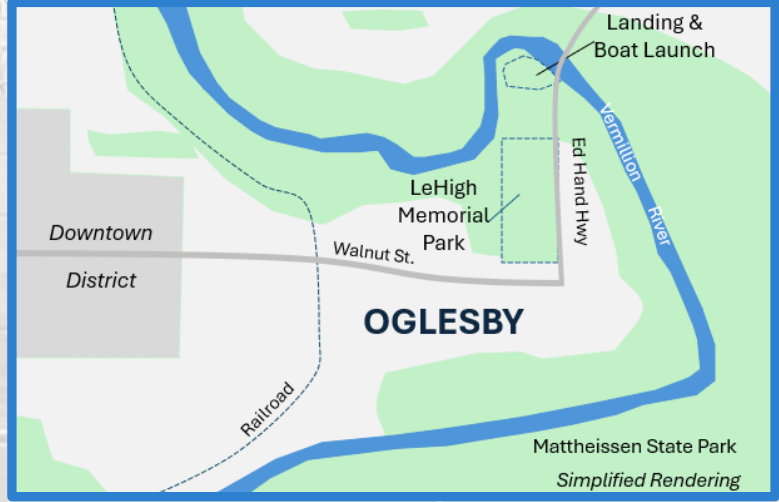


The Great Loop: An Amazing Boating Adventure – LakeHub



Carlyle, IL



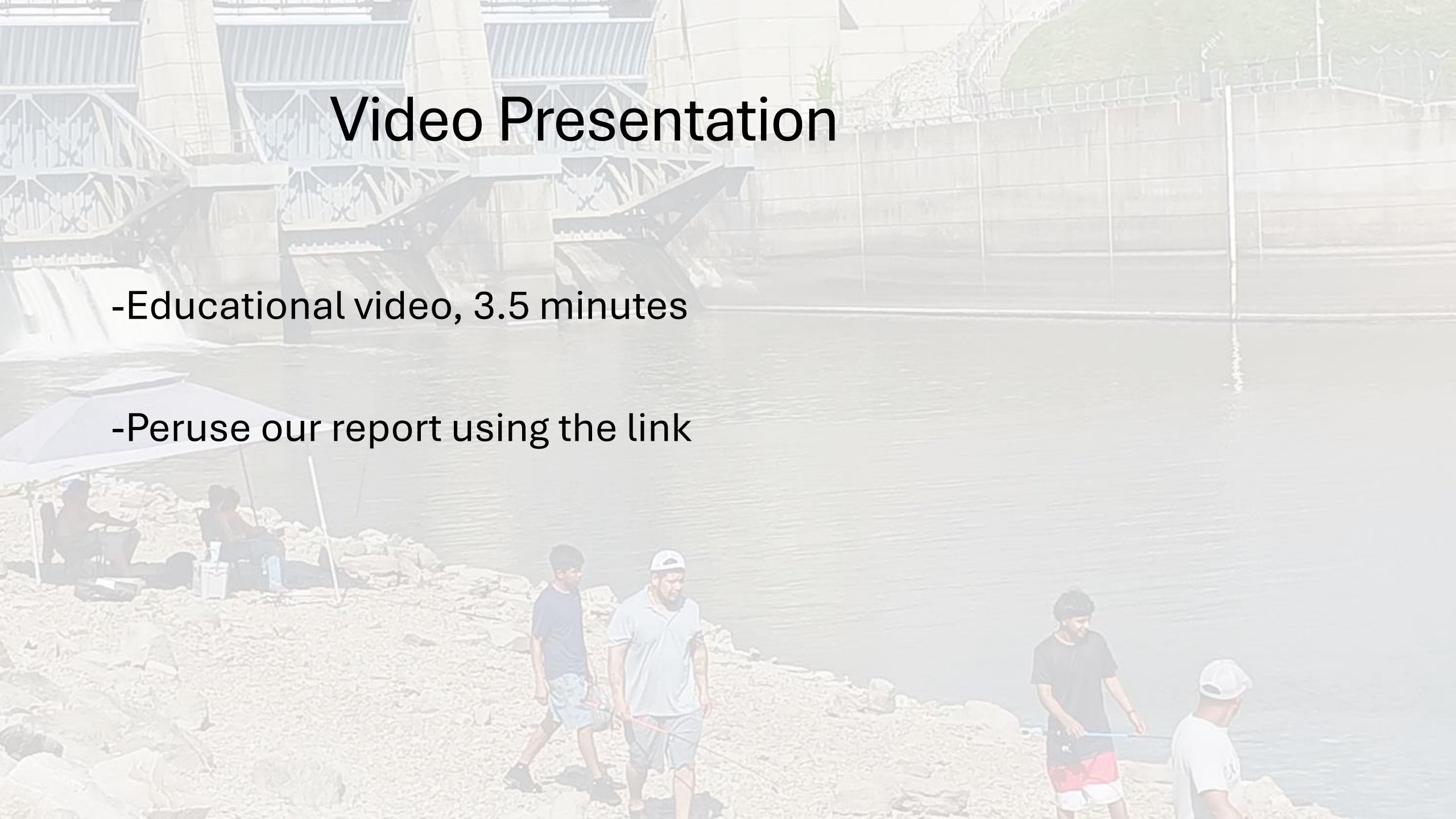


Oglesby, IL

Video Presentation

-Educational video, 3.5 minutes

-Peruse our report using the link



Challenges

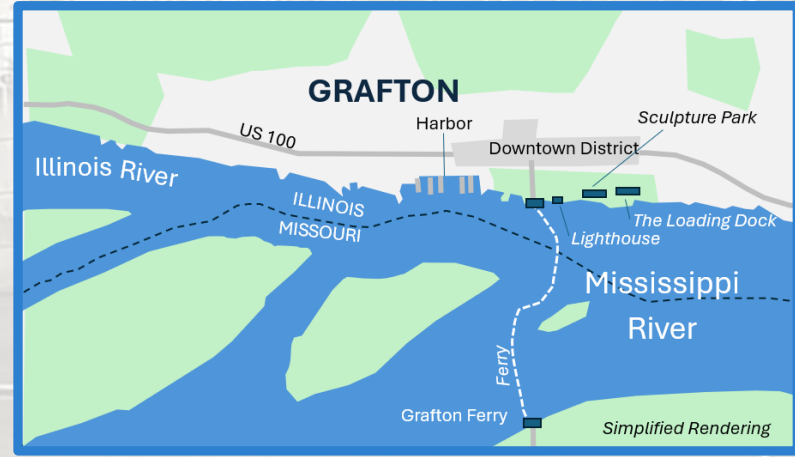
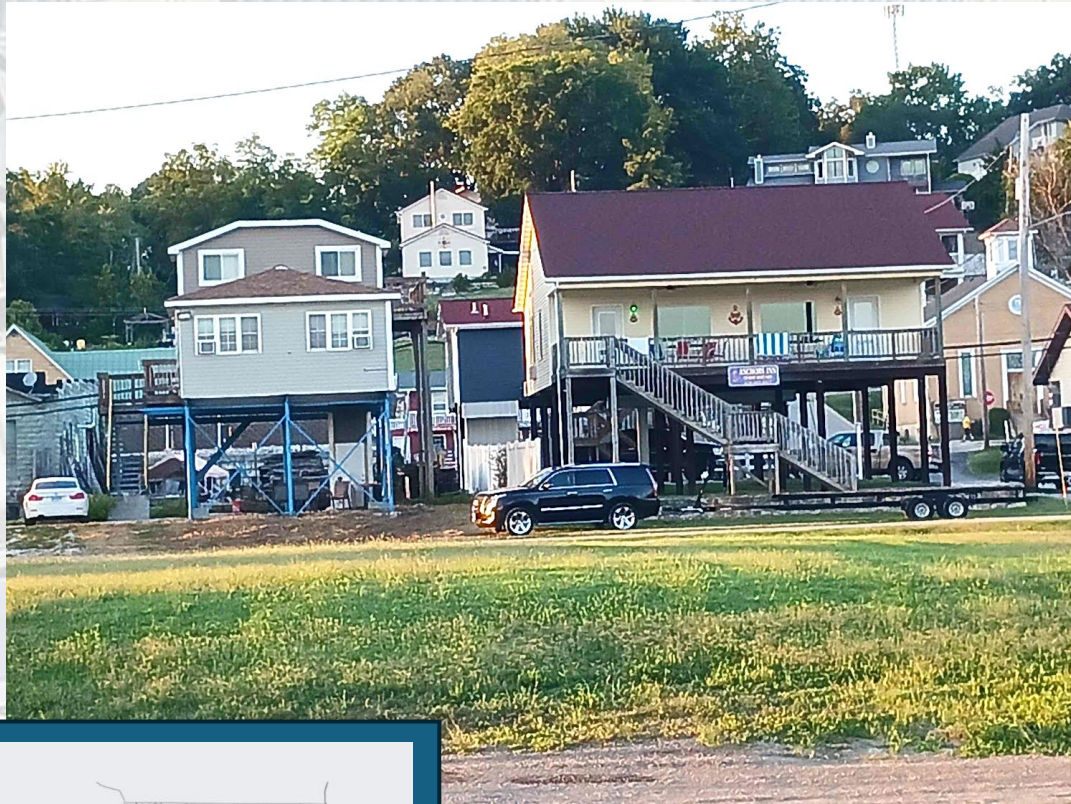
- **Few municipalities with populations below 5,000 have created prominent statewide attractions along rivers** that are magnets for tourism. Most focus on festivals for those living nearby. Galena and Grafton are exceptions.
- **Residential or hospitality developments on riverfront parcels are uncommon.** Few municipalities subsidize river-oriented businesses. Among the reasons are chronic flooding, hefty levees, and modest economic growth.
- **Municipal governments generally lack the resources to engage in large-scale habitat preservation efforts** or directly manage wetlands, with Charleston and Monticello being notable exceptions. Nonetheless, many have strong relationships with nonprofit conservation organizations.



**18th Annual Galena
Oktoberfest**



Galena, IL



Grafton, IL



Charleston, IL



Table 2. Policies and Program of 25 Featured Communities

Featured Community	Riverside Park (* behind levee, ** separated by highway, ^ maintained by local nonprofit, #overlook)	Festival(s) or large events along river (*on federal land)	Municipal Camp-ground (*privately run)	Public Boat launch	Nature Center along River	Amphitheater or performance stage	Largescale Habitat Preservation	Extensive Nonprofit Conservancy	Pedestrian Bridge(s)	Marina, full service
Bourbonnais	X		X*	X						
Carlyle	X	X*		X						
Charleston	X			X			X	X		
East Dubuque	X#			X						X
Elizabethtown	X			X						
Galena	X	X		X					X	
Godfrey	X^			X	X					
Grafton	X			X						X
Hamilton	X			X						
Havana	X		X	X	X	X				
Henry	X			X						X
Lacon	X	X		X						X
Mahomet	X			X			X	X		

New Activities for 2023-24

- Municipal Recognition & Report
- Event on evening of February 13 + Webinars
- Program near Alton on April 10 (late morning)
- River Fellows Program
- Join our listserv

chaddick@depaul.edu

