

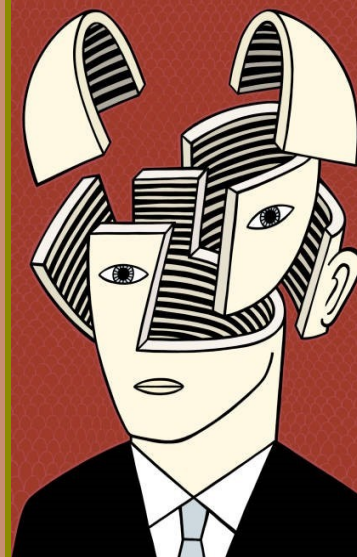
S  
E  
P  
T  
E  
M  
B  
E  
R  
20  
22

re/search  
re/search  
re/search

news for LAS faculty from the

# Faculty Scholarship Collaborative

N  
E  
W  
S



A  
P  
P  
L  
Y



URC, QIC, PSC

The Faculty Scholarship Collaborative opens the Fall 2022 season with a marquee roster of news, notices, revivals, and debuts of opportunities and resources to help make this a banner year for you and your scholarly pursuits.

As part of our commitment to serve the evolving needs of our LAS faculty, we're delighted to welcome **Renee Caliendo** to the FSC in the new position of **Research and Grants Specialist**. Renee's previous experience managing grants for the College of Science and Health and her grants work in Restricted Accounting well-equip her to advise LAS grant recipients on the ins and outs of grant proposals, management, and best practices. She joins staff members **Nandhini Gulasingam**, available to help faculty with your data-related projects, and **Linda Levendusky**, who can provide editorial assistance. Our own support comes from the College of Liberal Arts and Social Sciences through **Tracey Lewis-Elligan** (SOC and Acting Associate Dean of Research and Graduate Programs) and our Advisory Board members **Molly Andolina** (PSC), **John Mazzeo** (MPH), and **Zack Ostrowski** (ART).

Stumped by a **methodology** issue that has you wracking your brain? Or, does the challenge of data input and analysis instead set your statistical synapses sizzling? The FSC is playing matchmaker: assembling an internal **resource pool** of faculty across disciplines who could lend a hand to the needy and bridge the gap when such occasions arise. Please [contact us](#) if you can contribute to this worthy cause and add a line of DPU service to your CV in the process.

And for the knottiest methodological questions when need clearly overtakes know-how, we're happy to report that we now have access to select professional help from [The Analysis Factor](#). This group of experts offers individual consulting support in applied statistical analysis in a wide variety of contexts. Contact the [FSC](#) to see if you're a candidate for such help.

**Faculty Friday** is the watchword at the FSC this year. Each Friday, starting September 30, you're invited to **Turn the Page**, a virtual, informal, drop-in writing group we're hosting from **9-11 am**. Here faculty looking for dedicated writing time can gather to urge and encourage each other forward in a supportive group setting.

This year we're also debuting a **project incubator** for LAS faculty to showcase works in progress. Once each quarter, we'll offer you a stage to talk about your process, breakthroughs, stumbling blocks, or just get feedback from colleagues about a current work. [Let us know](#) if you have a project you'd like to present or if the writing group interests you.

Whatever your need, the welcome mat is out at the FSC. Stop by, say hi, check out our AV equipment, or visit our computer lab on the 3rd floor of 990 West Fullerton to use our GIS mapping, TExtract indexing, LIWC word analysis, and Atlas.ti, NVivo and Stata statistical and specialty software. You can also [email us](#) to set up remote access.

We look forward to seeing you!

A new cycle of funding for [internal grants](#) from DPU Council programs has begun. You have until **October 15** to apply for support from:

- **UNIVERSITY RESEARCH COUNCIL**
- **QUALITY OF INSTRUCTION COUNCIL**
- **PUBLIC SERVICE COUNCIL**

You can [submit](#) up to two proposals, from two different Councils (one to each). The application now uses a template form for the narrative section. Round two funding will be due March 15. See the [proposal guidelines](#).

FSRG

Applications for **2023 Faculty Summer Research Grants** also may be submitted from now through **October 10**. The guidelines, which include a link to the application, can be found on the [LAS internal grants](#) website.

LSRG

The application window has also reopened for **Late-Stage Research Grants** from LAS for indexing or editorial services for tenure-line faculty with research projects already accepted for publication. [Apply](#) while these limited funds are still available.

OPED PROJECT

**September 23** is the deadline to apply for a **2023 OpEd Project** Fellowship from DePaul. These 20 faculty and staff Fellows will meet five times over the academic year for media training in how to amplify your voice and place your social and political ideas in the public arena. All full-time faculty and staff are eligible. Visit the [website](#) to learn more.

EXTERNAL OPPORTUNITIES

You have until **October 14** to apply for Sinai Urban Health Institute's **2023 SUHI Equity Research Fellows Program**. All current faculty with a Ph.D. or equivalent are eligible. Fellows work with Sinai on community health projects to advance health equity through data-driven research. The one-year Fellowship begins January 1, 2023 and carries a \$15,000 stipend. Fernando DeMaio (SOC) and Dan Schober (MPH) are past participants.

And don't miss this month's listings of external funding initiatives in the arts and humanities and the social sciences compiled by the **Office of Research Services** and available [here](#).